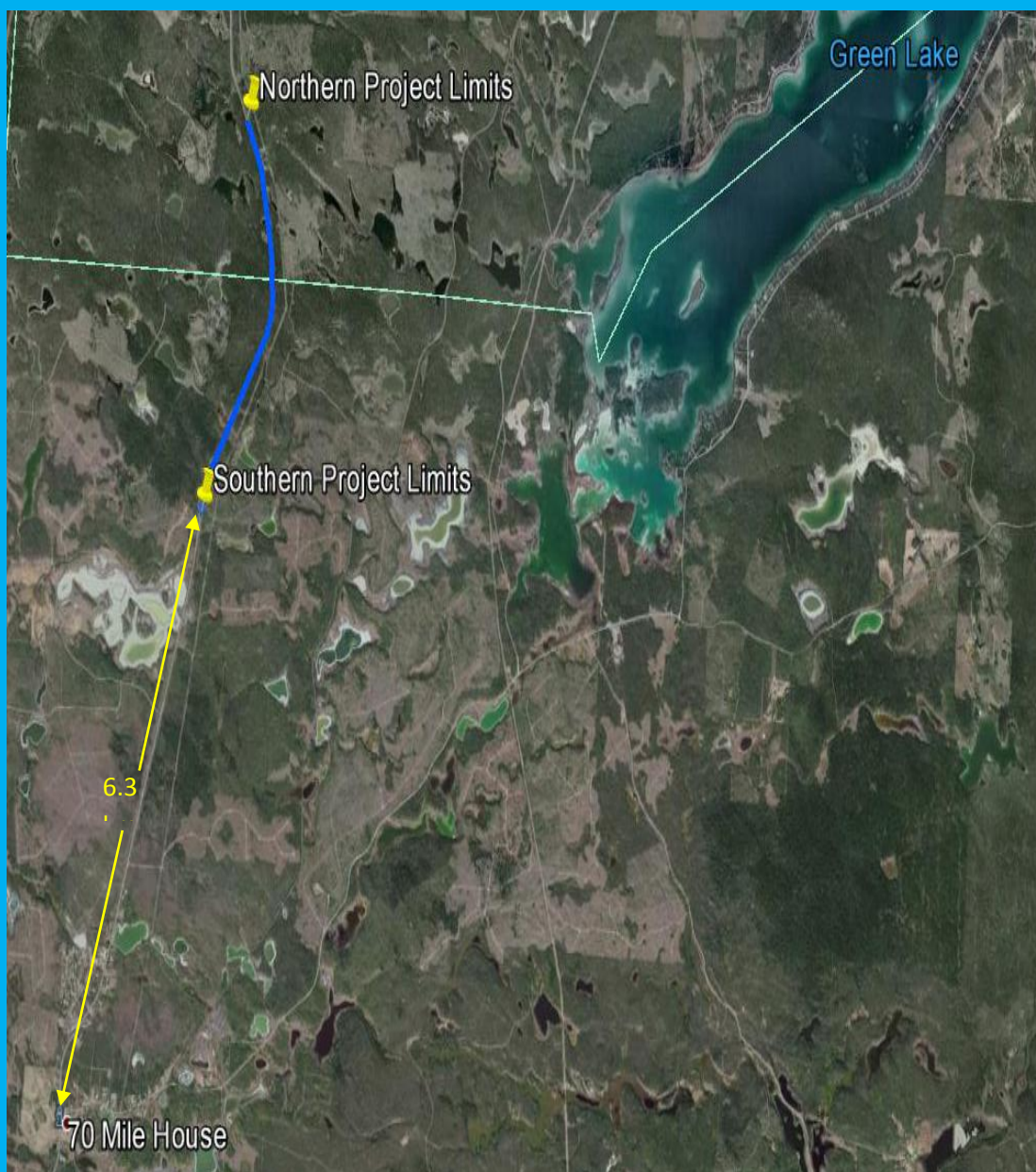


Welcome to the Information Session:

Highway 97: 74 Mile to 76 Mile



Preliminary Engineering Update

Your feedback into the Design Concept is appreciated

Project Justification:

- The Cariboo Connector Program supports trade and economic development to ensure rural communities are able to grow and stay competitive.
- Phase 2 of the program consists of nine projects and will add 30 km of new four-lane sections to Highway 97. This builds on the \$240 Million invested to widen the Cariboo Connector to four lanes since 2005.
- This project will ensure that all road users – local residents, tourists, and industrial vehicles have safer, more efficient travel.
- This area has an average of 5100 vehicles per day of which 30% are trucks.
- With the Highway already expanded to four lanes on both sides of this section completing this infill section will provide a 31.5 km continuous segment of four lane from 70 Mile to 6 km south of 100 Mile House.
- This Project also supports the BC Jobs Plan and will create 60 direct and indirect person years of employment

Project Benefits:

Improving safety, mobility and economic development by:

- Providing a safer horizontal alignment
- Providing a safer vertical alignments and improved sight distances.
- Providing additional passing opportunities
- Consolidation of highway accesses
- Providing a frontage road for current driveways
- Providing lighting at Frontage Road intersection
- Providing wildlife crossing opportunities across the highway

What factors were considered in this Design Concept?

The current design concept attempts to achieve balance among the following important considerations:

- Improving Highway Safety
- Improving Safety of Highway access
- Minimizing Property Impacts

- Minimizing Environmental Impacts
- Consultation with First Nations
- Improvements to Alignment
- Constructability
- Traffic Management
- Capital Costs

Project Improvements:

- Upgrading 4.5 km of Highway 97 to a four lane highway
- Provide a 2.6m wide median
- Improving the safety and access of private residences by developing a frontage road to replace direct highway access
- Illumination will be provided at the Frontage Road Access
- Wildlife crossing culverts will be provided to accommodate amphibians, small mammals such as badgers, and ungulates
- Stormwater quality treatment measures such as vegetated ditches, swales or bio filtration areas will be considered to treat runoff from the highway will be considered to treat runoff from the highway

Project Schedule:

- Property Acquisition starting: November 2013(All Crown Land)
- Design complete: March 2014
- Planned construction start: Summer 2014
- Planned construction completion: Fall 2015
- Stakeholder consultation ongoing

Next Steps:

- Seek Stakeholder Input
- Finalize Design
- Relocate Utilities
- Proceed to Construction

Thank you...

We value your input as we finalize the detailed design

Please provide us with your comments and thank you for attending the information session.