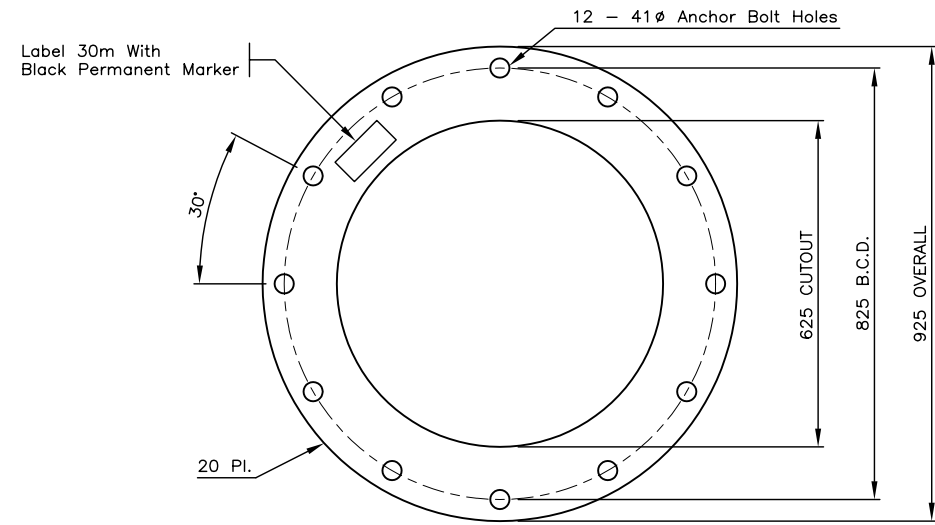
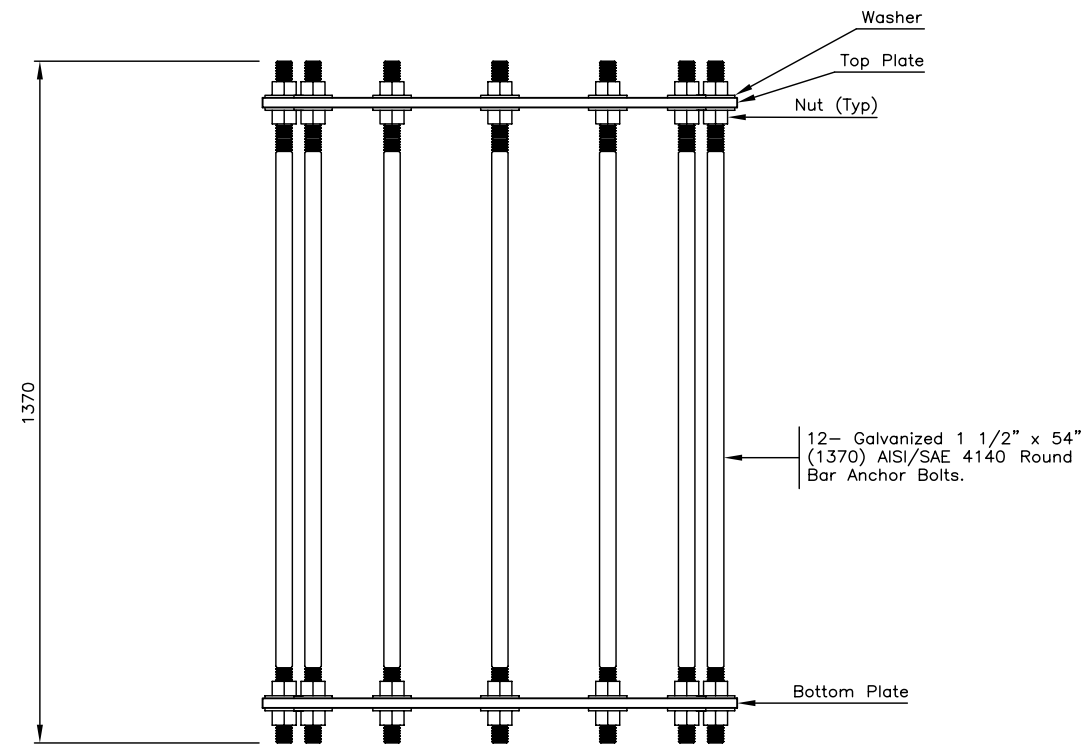


Notes:

- 1) Refer to Ministry Material Standard Chapter MS307 For Pole Specifications.
- 2) Bolt Cages Shall Be Supplied Unassembled With Nuts And Washers Installed On Bolts.
- 3) All Dimensions Are In Millimetres Unless Otherwise Noted.




**ANCHOR BOLT CAGE
TOP AND BOTTOM PLATE**



ANCHOR BOLT CAGE DETAIL

NOT TO SCALE

No.	Description	Date
J		
I		
H		
G		
F		
E		
D		
C		
B		
A		

ANCHOR BOLT CAGE FOR TYPE L & TYPE H 30m HIGHMAST POLES	
DETAILS	
 BRITISH COLUMBIA Ministry of Transportation and Highways	Drawing No. MS364.1