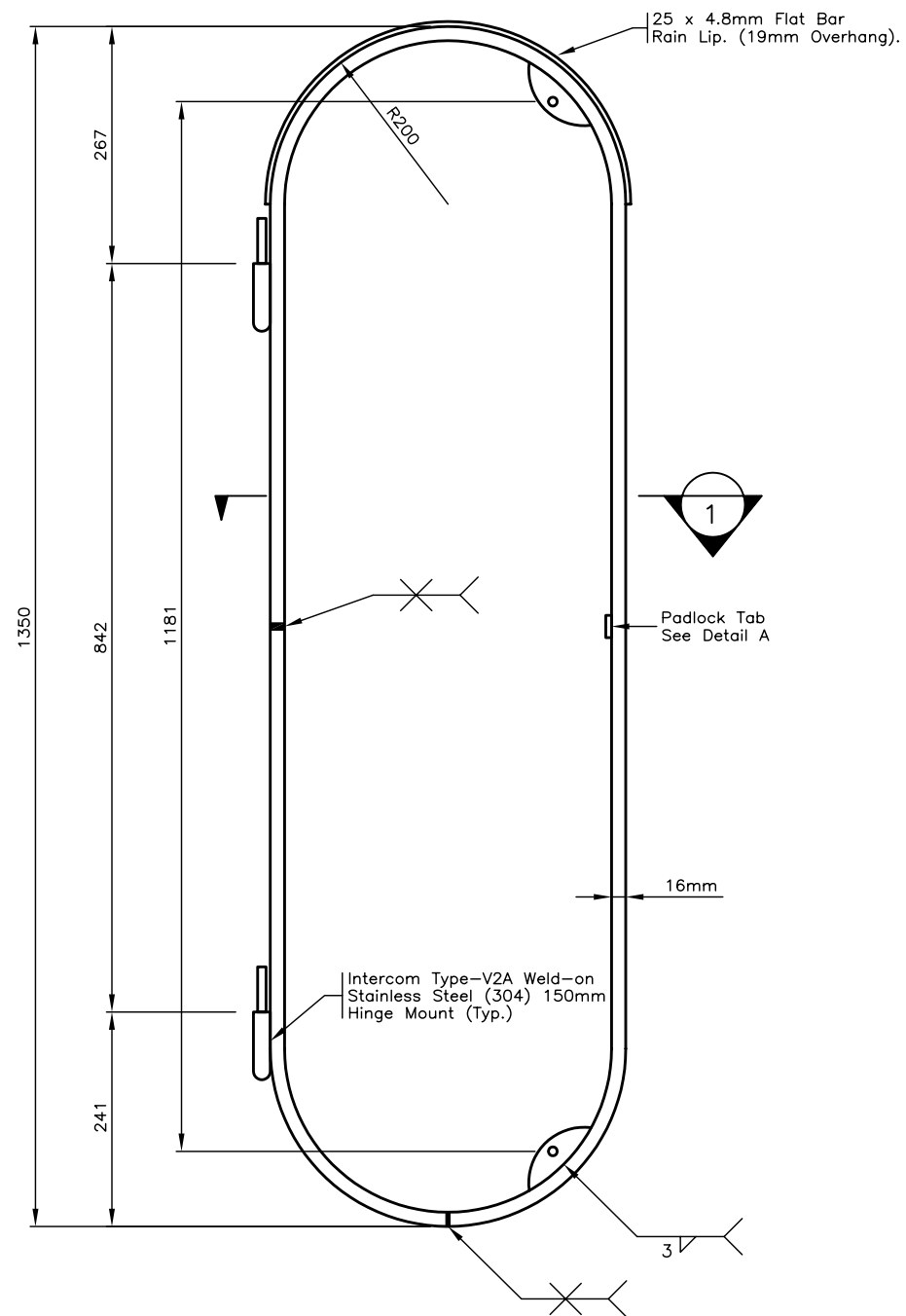


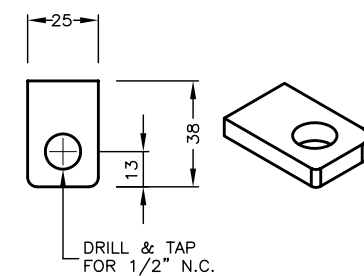
SECTION 1



HANDHOLE RING

Notes:

- 1) Refer to Ministry Material Standard Specifications Chapter MS307 for Pole Specifications.
- 2) All Nuts, Bolts And Washers To Be Assembled On Pole.
- 3) All Dimensions Are In Millimetres Unless Otherwise Noted.



DETAIL A  
Padlock Tab

NOT TO SCALE

No.	Description	Date	HIGHMAST POLE HANDHOLE	
J			<p style="text-align: center;">DETAILS</p> <p style="display: inline-block; vertical-align: middle; margin-left: 10px;"> <b>BRITISH COLUMBIA</b>            Ministry of Transportation and Highways         </p>	
I				
H				
G				
F				
E				
D				
C				
B				
A				
REVISION			Drawing No. <b>MS362.2</b>	