

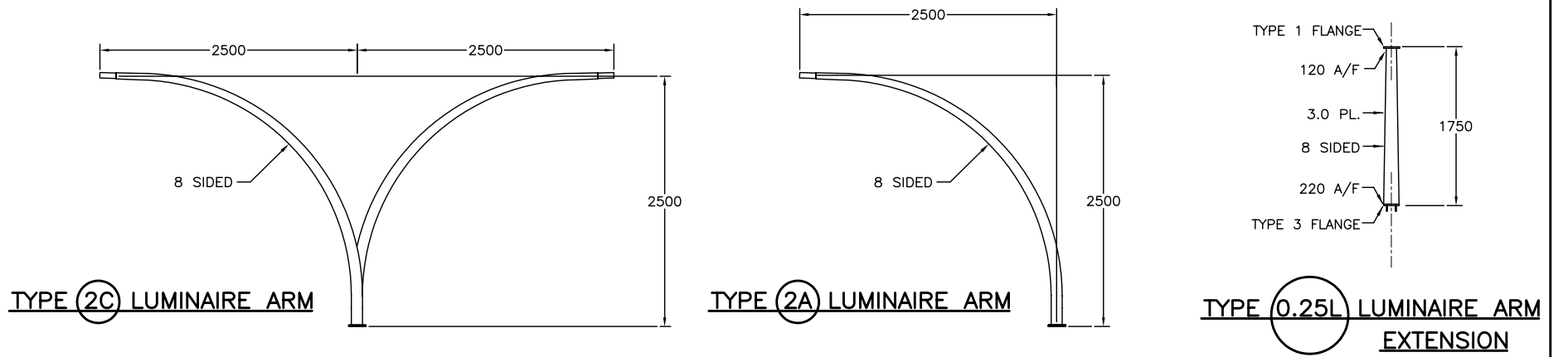
PARTS LIST FOR TYPE S POLE		
PART	MINISTRY STOCK NUMBER	MASS (kg)
TYPE [S] POLE SHAFT	SN3152	385
TYPE [5S] SIGNAL ARM - 5.0m	SN3150	104
TYPE [5.5S] SIGNAL ARM - 5.5m	SN3155	111
TYPE [6S] SIGNAL ARM - 6.0m	SN3160	118
TYPE [6.5S] SIGNAL ARM - 6.5m	SN3165	125
TYPE [7S] SIGNAL ARM - 7.0m	SN3170	132
TYPE [7.5S] SIGNAL ARM - 7.5m	SN3175	192
TYPE [8S] SIGNAL ARM - 8.0m	SN3180	204
TYPE [8.5S] SIGNAL ARM - 8.5m	SN3185	214
TYPE [9S] SIGNAL ARM - 9.0m	SN3190	224
TYPE [9.5S] SIGNAL ARM - 9.5m	SN3195	292
TYPE [10S] SIGNAL ARM - 10.0m	SN3100	306
TYPE [10.5S] SIGNAL ARM - 10.5m	SN3105	320
TYPE [11S] SIGNAL ARM - 11.0m	SN3110	340
TYPE [S] POLE SHAFT	SN3152	385
TYPE L SIGN ARM [LSA] LENGTH VARIES	SN2095	20 PER METRE
TYPE L SIGN ARM [1.2LSA] 1.2m LONG	SN2093	24
TYPE [LB] SIGN ARM AND BRACKETS	SN2096	100
TYPE [SS] SIGN ARM EXTENSION - LENGTH VARIES	SN3090	45 PER METRE
TYPE [3SS] SIGN ARM EXTENSION - 3.0m	SN3093	135
TYPE [4SS] SIGN ARM EXTENSION - 4.0m	SN3094	180
TYPE [5SS] SIGN ARM EXTENSION - 5.0m	SN3095	225
TYPE [1.75L] LUMINAIRE ARM EXTENSION - 1.75m	SN2063	29
TYPE [0.25L] LUMINAIRE ARM EXTENSION - 0.25m	SN2064	10
TYPE [2A] LUMINAIRE ARM	SN1832	35
TYPE 1 FLANGE COVER PLATE [1FCP]	SN1367	1.5
TYPE S FLANGE COVER PLATE [SFCP]	SN1368	3
TYPE 3 FLANGE COVER PLATE [3FCP]	SN2084	4
POST TOP TENON [PTT]	SN1831	5
TYPE S POLE BOLT KIT	SN1790S	14

* [] I.D. LABEL ON POLE

NOTES

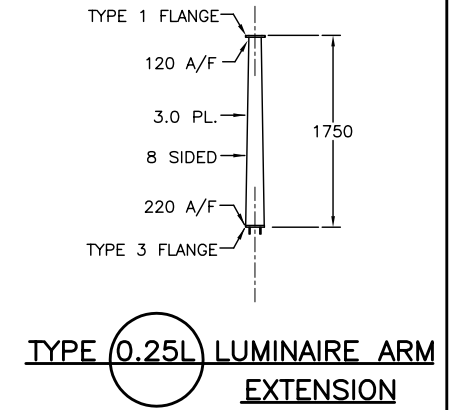
- SEE MATERIAL STANDARD SPECIFICATIONS CHAPTER 301 - TRAFFIC SIGNAL, LUMINAIRE, AND SIGN POLE STRUCTURES FOR ADDITIONAL INFORMATION.
- ALL DIMENSIONS ARE IN MILLIMETRES UNLESS OTHERWISE NOTED.
- 'SN' DENOTES MINISTRY STOCK NUMBER.

'A/F' DENOTES ACROSS THE FLATS

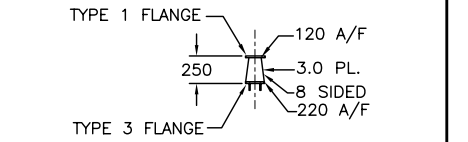


TYPE 2C LUMINAIRE ARM

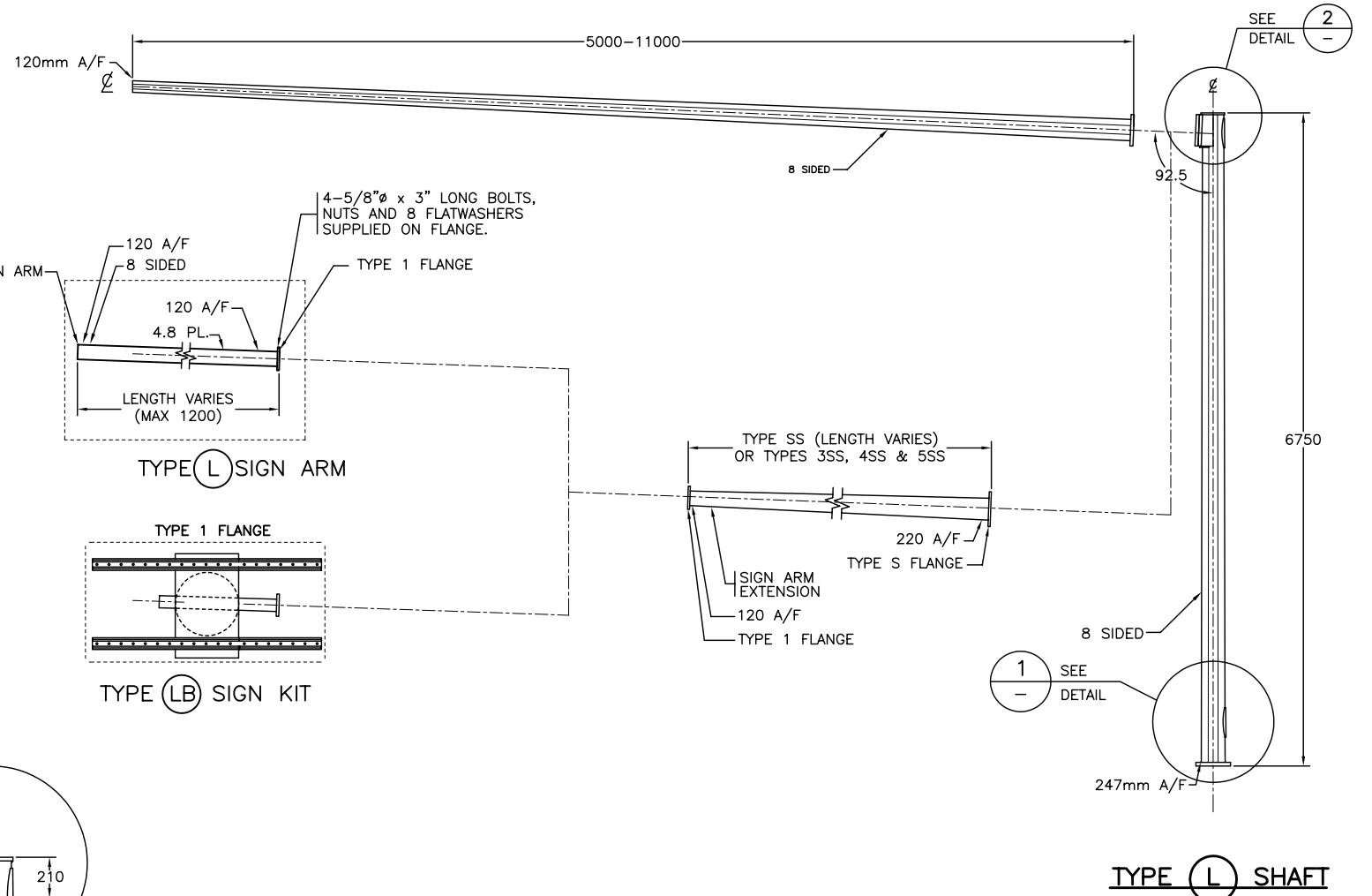
TYPE 2A LUMINAIRE ARM



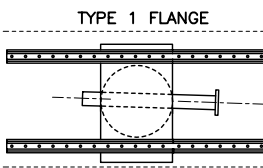
TYPE 0.25L LUMINAIRE ARM EXTENSION



TYPE 1.75L LUMINAIRE ARM EXTENSION

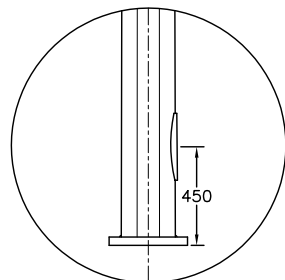


TYPE L SIGN ARM

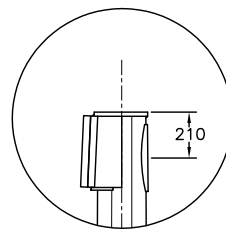


TYPE LB SIGN KIT

TYPE L SHAFT



DETAIL 1 N.T.S.



DETAIL 2 N.T.S.

No.	Description	Date
J		
I		
H		
G		
F		
E		
D		
C		
B		
A	NEW DRAWING	DEC03

REVISION	

TYPE S SHAFT, ARMS AND EXTENSIONS ELEVATIONS		
GENERAL ASSEMBLY		
	Ministry of Transportation and Highways	Drawing No. MS321.1