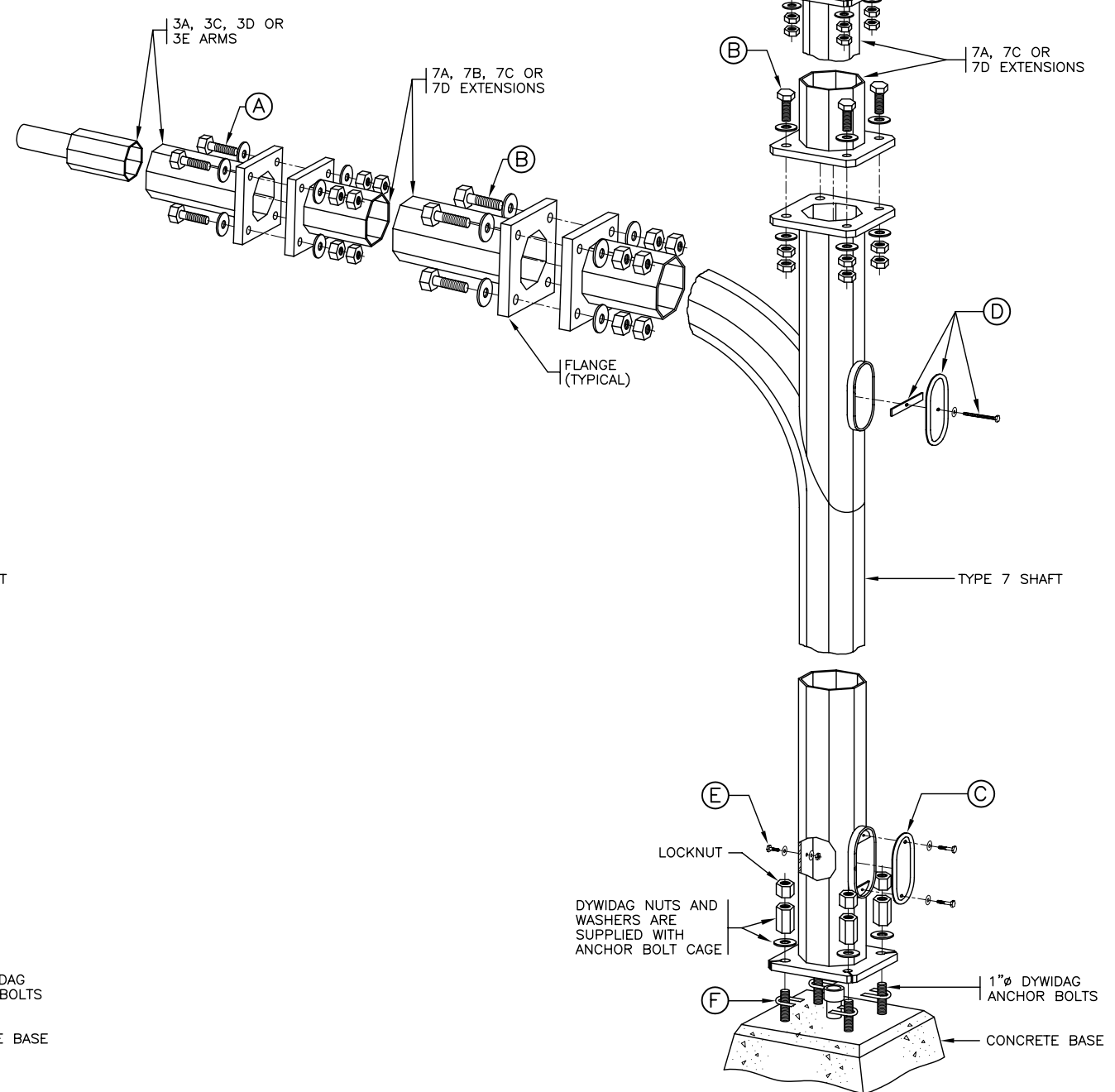


POLE ASSEMBLY DETAIL



POLE ASSEMBLY DETAIL

TYPE 6 SHAFT BOLT KIT (SN1792)		
ITEM	QUANTITY	DESCRIPTION
A	4	5/8"Ø x 3" LONG BOLT, 2 NUTS AND 2 FLATWASHERS.
B	4	1"Ø x 5" LONG BOLT, 2 NUTS AND 2 FLATWASHERS.
C	1	LARGE HANDHOLE COVER WITH 2 - 3/8"Ø x 1" LONG BOLTS AND 2 FLATWASHERS
D	1	3/8"Ø x 1 1/4" LONG BOLT, NUT AND 2 FLATWASHERS.
E	4	LEVELING SHIM FOR DYWIDAG BOLTS (1.6mm GALVANIZED STEEL)

TYPE 7 SHAFT BOLT KIT (SN1792A)		
ITEM	QUANTITY	DESCRIPTION
A	8	5/8"Ø x 3" LONG BOLT, 2 NUTS AND 2 FLATWASHERS
B	8	1"Ø x 5" LONG BOLT, 2 NUTS AND 2 FLATWASHERS.
C	1	LARGE HANDHOLE COVER WITH 2 - 3/8"Ø x 1" LONG BOLTS AND 2 FLATWASHERS
D	1	SMALL HANDHOLE COVER WITH 1 - 3/8"Ø x 3 1/2" LONG (FULLY THREADED) BOLT, 2 FLATWASHERS AND BACKING BAR
E	1	3/8"Ø x 1 1/4" LONG BOLT, NUT AND 2 FLATWASHERS.
F	4	LEVELING SHIM FOR DYWIDAG BOLTS (1.6mm GALVANIZED STEEL)

SEE DRAWING MS315.1 AND MS315.2 FOR NOTES

NOT TO SCALE

No.	Description	Date	TYPE 6 & 7 SHAFTS, ARMS AND EXTENSIONS	
J			<b>ASSEMBLY AND BOLT KITS</b> <b>BRITISH COLUMBIA</b> Ministry of Transportation and Highways Drawing No. <b>MS315.4</b>	
I				
H				
G				
F				
E				
D				
C				
B				
A	GENERAL REVISIONS	AUG96		
REVISION				