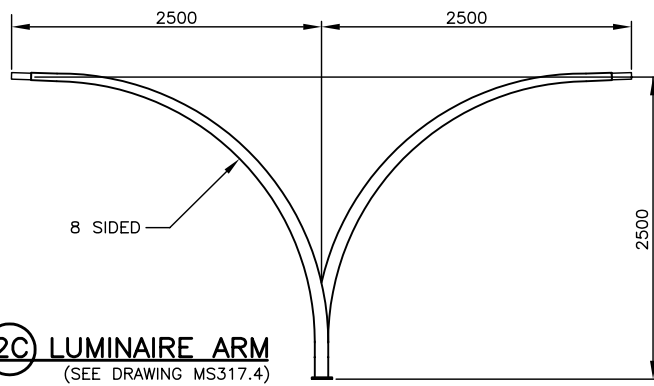
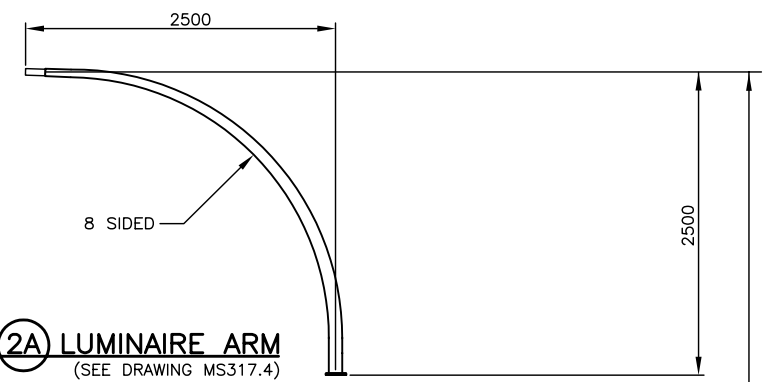


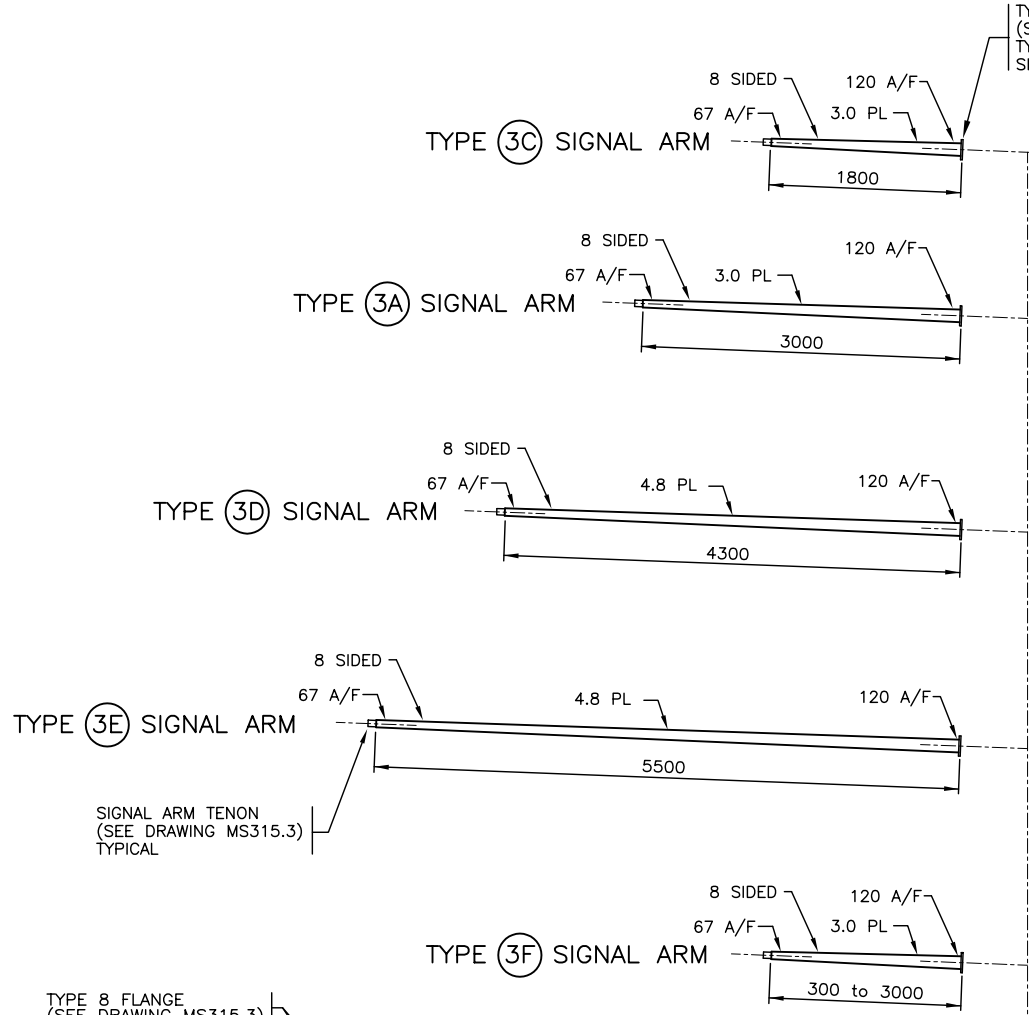
PARTS LIST FOR TYPE 7 SHAFT		
PART	MINISTRY STOCK NUMBER	APPROX. MASS (kg)
TYPE 7 SHAFT	SN1831A	465
TYPE 3C SIGNAL ARM - 1.8 m	SN1836	18
TYPE 3A SIGNAL ARM - 3.0 m	SN1834	27
TYPE 3D SIGNAL ARM - 4.3 m	SN1837	54
TYPE 3E SIGNAL ARM - 5.5 m	SN1838	68
TYPE 3F SIGNAL ARM (3.0mm)	SN1836A	9 PER METRE
TYPE 7A LUMINAIRE/SIGNAL ARM EXTENSION - 0.25 m	SN1890A	20
TYPE 7B LUMINAIRE/SIGNAL ARM EXTENSION - 1.8 m	SN1890B	69
TYPE 7C SIGNAL ARM EXTENSION - 2.5 m	SN1890C	86
TYPE 7D LUMINAIRE/SIGNAL ARM EXTENSION - 4.8 m	SN1890D	154
TYPE L SIGN ARM	SN2095	20 PER METRE
TYPE 1.2L SIGN ARM - 1.2 m	SN2093	24
TYPE LB SIGN KIT	SN2096	100
TYPE 2A LUMINAIRE ARM	SN1832	35
TYPE 2C LUMINAIRE ARM	SN1833	65
POST TOP TENON	SN1831	5
TYPE 1 FLANGE COVER PLATE	SN1367	1.5
TYPE 8 FLANGE COVER PLATE	SN2089	2.5
TYPE 7 BOLT KIT	SN1792A	13



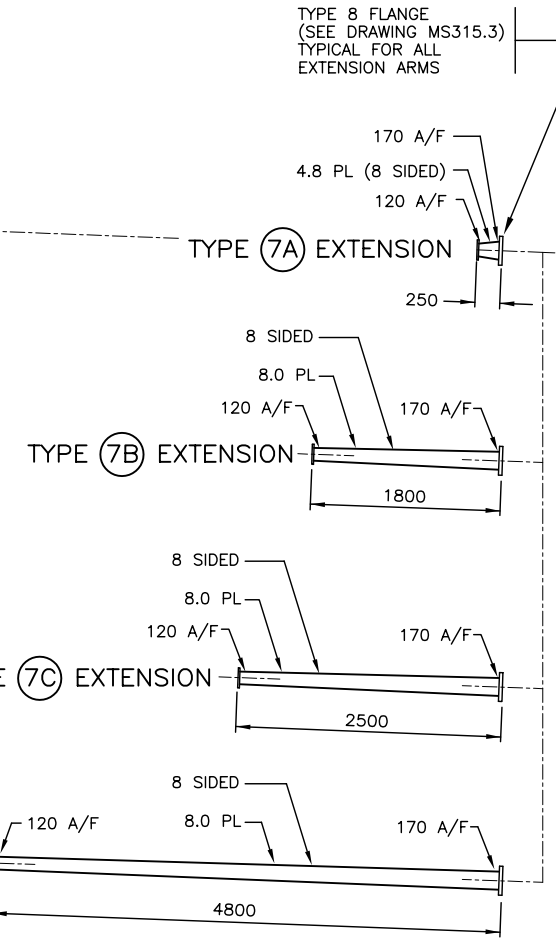
TYPE 2C LUMINAIRE ARM
(SEE DRAWING MS317.4)



TYPE 2A LUMINAIRE ARM
(SEE DRAWING MS317.4)

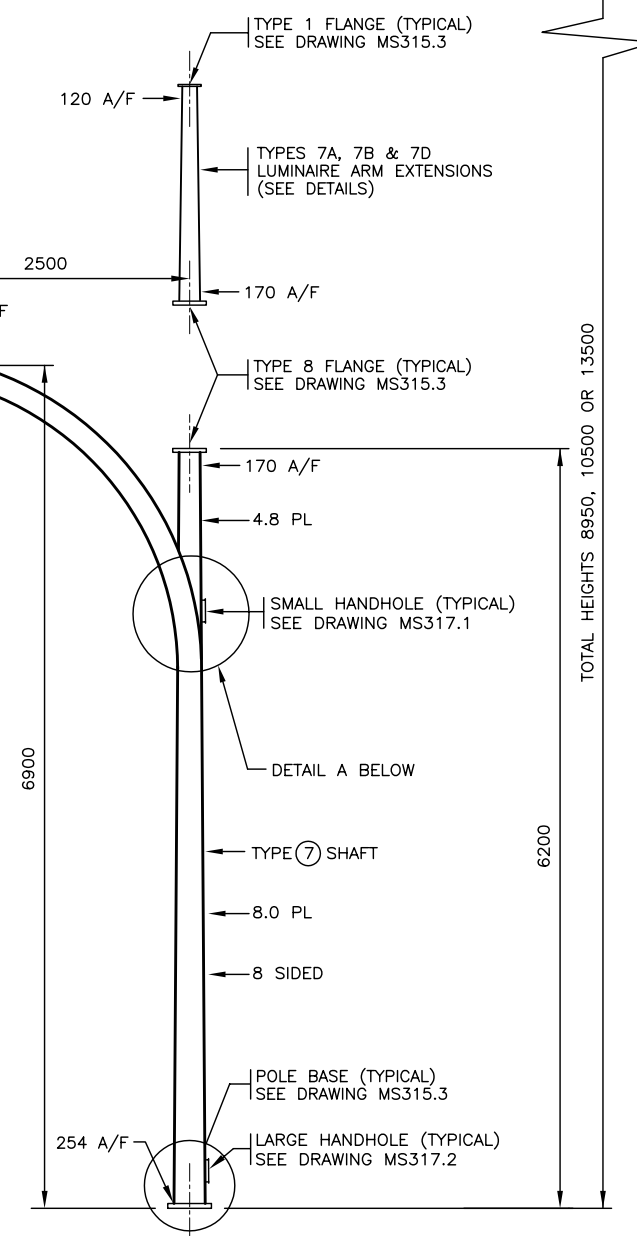


TYPE 1 FLANGE
(SEE DRAWING MS315.3)
TYPICAL FOR ALL
SIGNAL ARMS

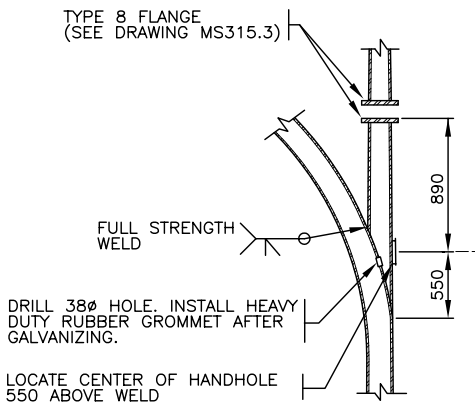


TYPE 8 FLANGE
(SEE DRAWING MS315.3)
TYPICAL FOR ALL
EXTENSION ARMS

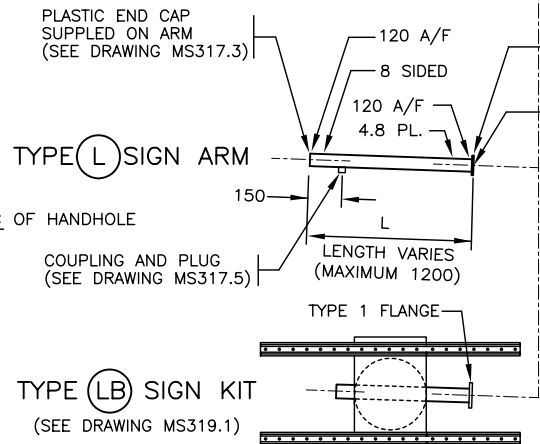
TYPE 1 FLANGE
(SEE DRAWING MS315.3)
TYPICAL FOR ALL
SIGNAL ARMS



TYPE 7 SHAFT



DETAIL A



TYPE LB SIGN KIT
(SEE DRAWING MS319.1)

4-5/8" x 3" LONG BOLTS,
NUTS AND 8 FLATWASHERS
SUPPLIED ON FLANGE.

'A/F' DENOTES ACROSS THE FLATS

- NOTES
- SEE MATERIAL STANDARD SPECIFICATIONS CHAPTER 301 - TRAFFIC SIGNAL, LUMINAIRE, AND SIGN POLE STRUCTURES FOR ADDITIONAL INFORMATION.
 - SEE DRAWING MS315.4 FOR BOLT KIT DETAILS.
 - SEE DRAWING MS317.6 FOR POST TOP TENON DETAIL.
 - SEE DRAWING MS317.5 AND .6 FOR FLANGE COVER PLATE DETAILS.
 - ALL DIMENSIONS ARE IN MILLIMETRES UNLESS OTHERWISE NOTED.
 - 'SN' DENOTES MINISTRY STOCK NUMBER.

NOT TO SCALE

No.	Description	Date
J		
I		
H		
G		
F		
E		
D		
C		
B		
A	GENERAL REVISIONS	AUG96
REVISION		

TYPE 7 SHAFTS, ARMS AND EXTENSIONS

ELEVATIONS



Drawing No. MS315.2 A