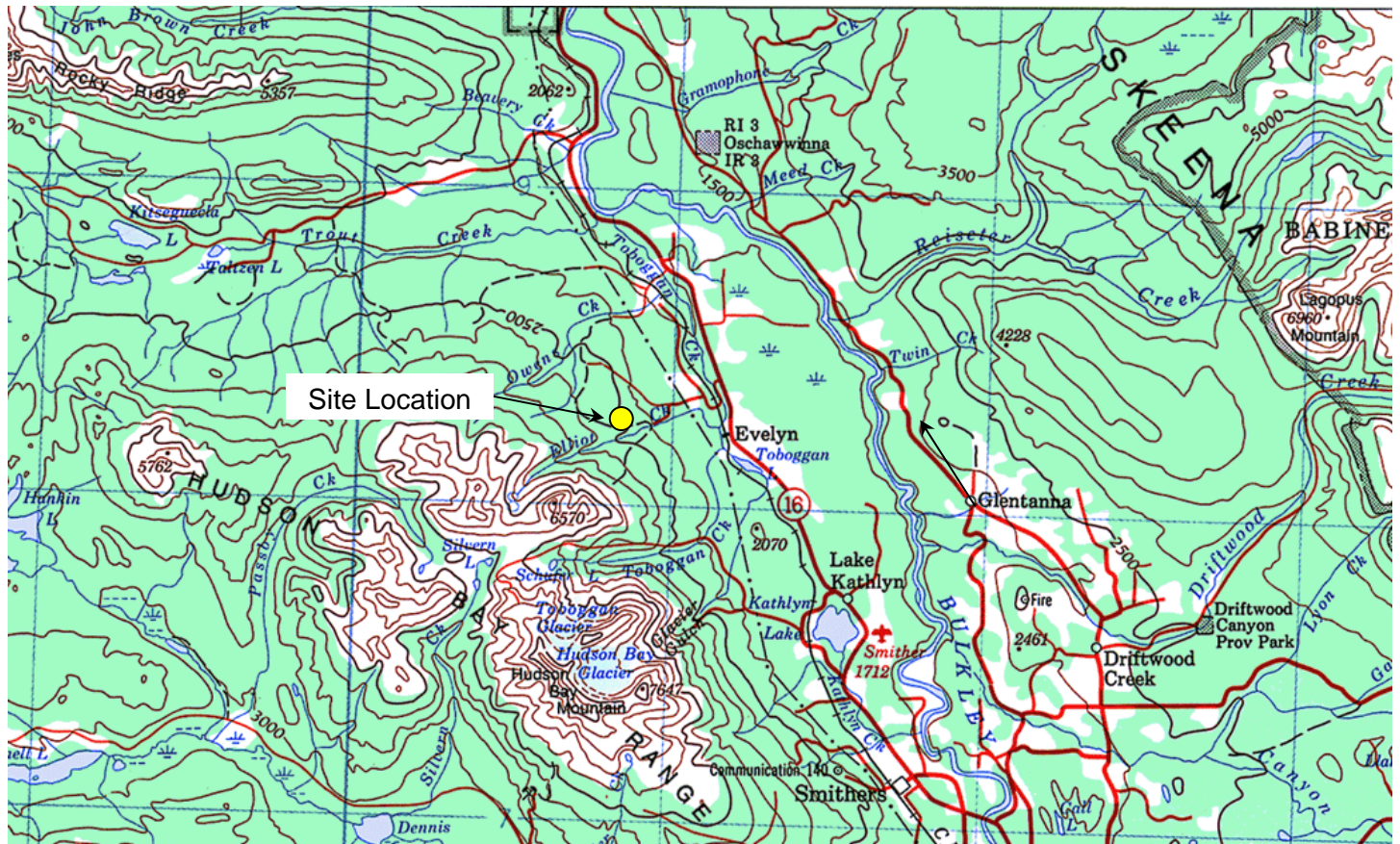


Map image imported from NTS Index Map Scale shown here is approximately 1:1 773 000.



Map image imported from NTS Map 93L Smithers. Scale approximately 1:235 000.



**McElhanney**

Site Location Plan  
 Pope Pit  
 Granular Resource Assessment

**Figure 1. Site Location**

SCALE:  
 See Above

DRAWN BY:  
 ED

DATE:  
 Mar 2010

PROJECT No:  
 2331-00578-4