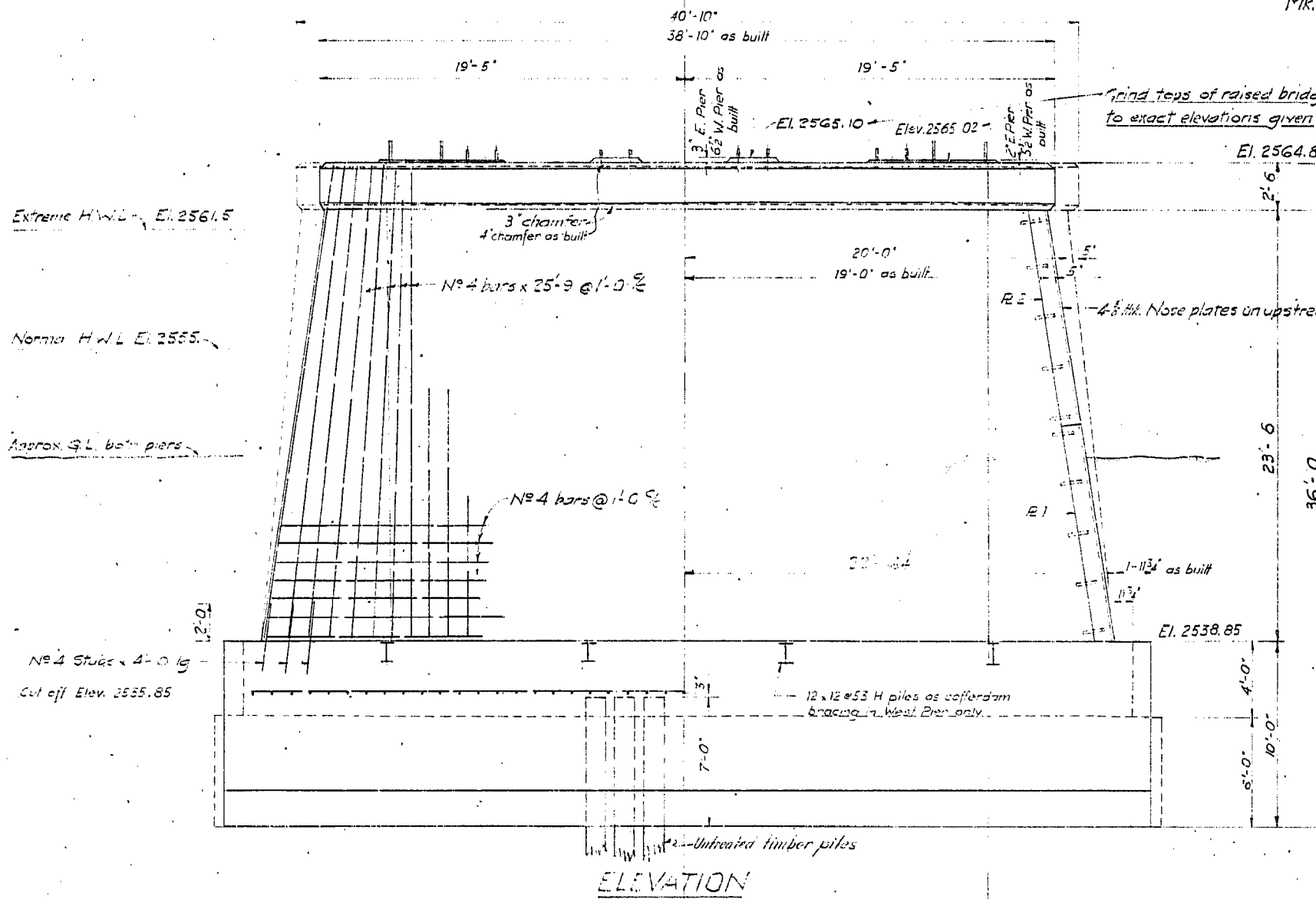
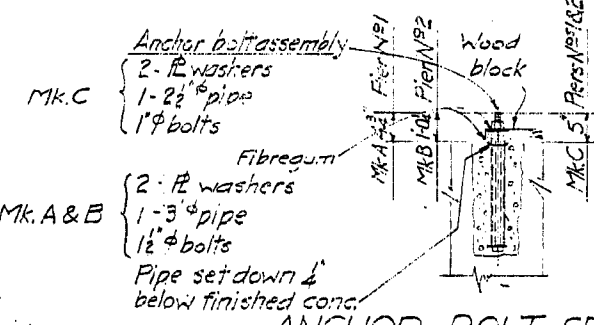


Symmetrical abut. except for nose plates

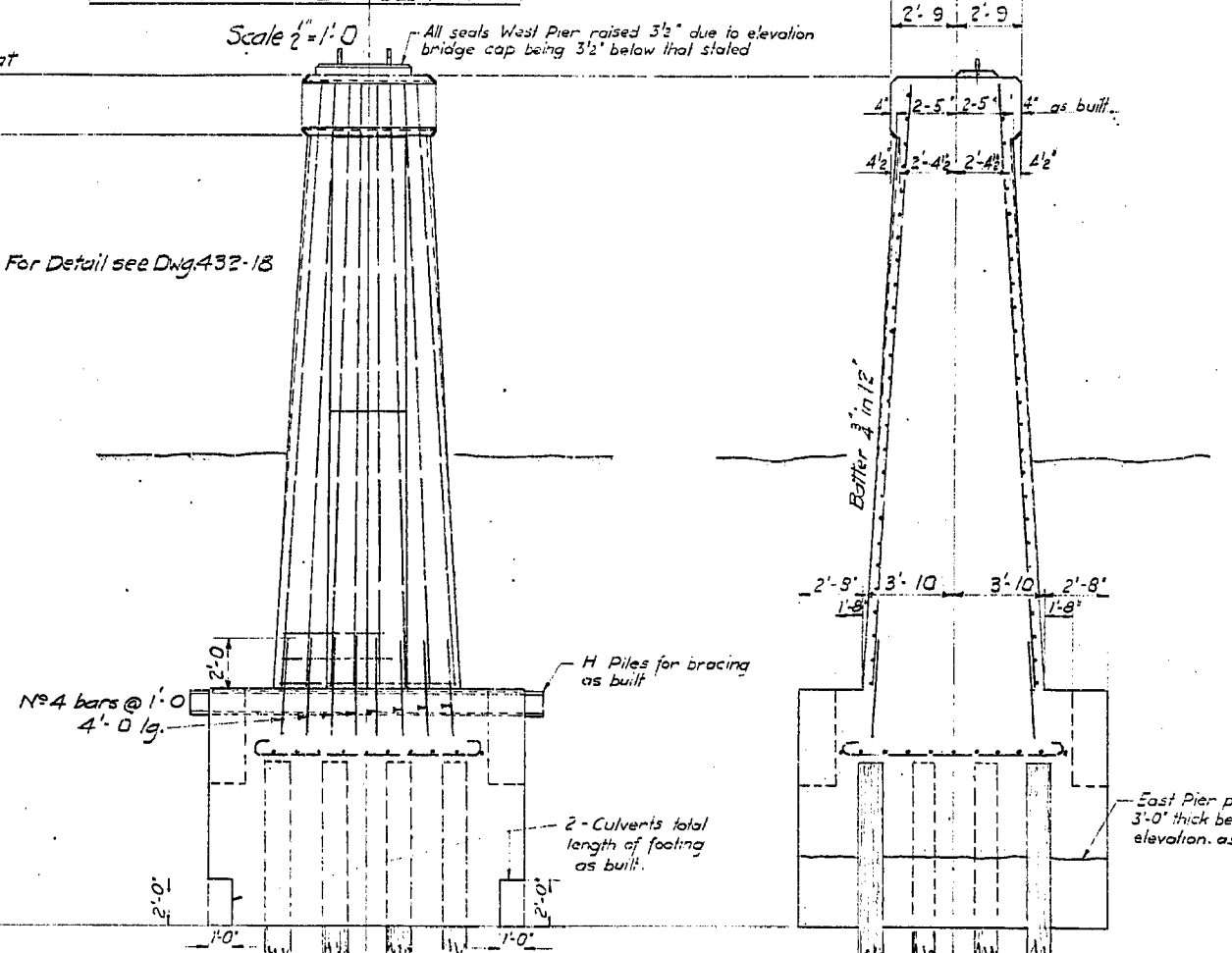


ELEVATION



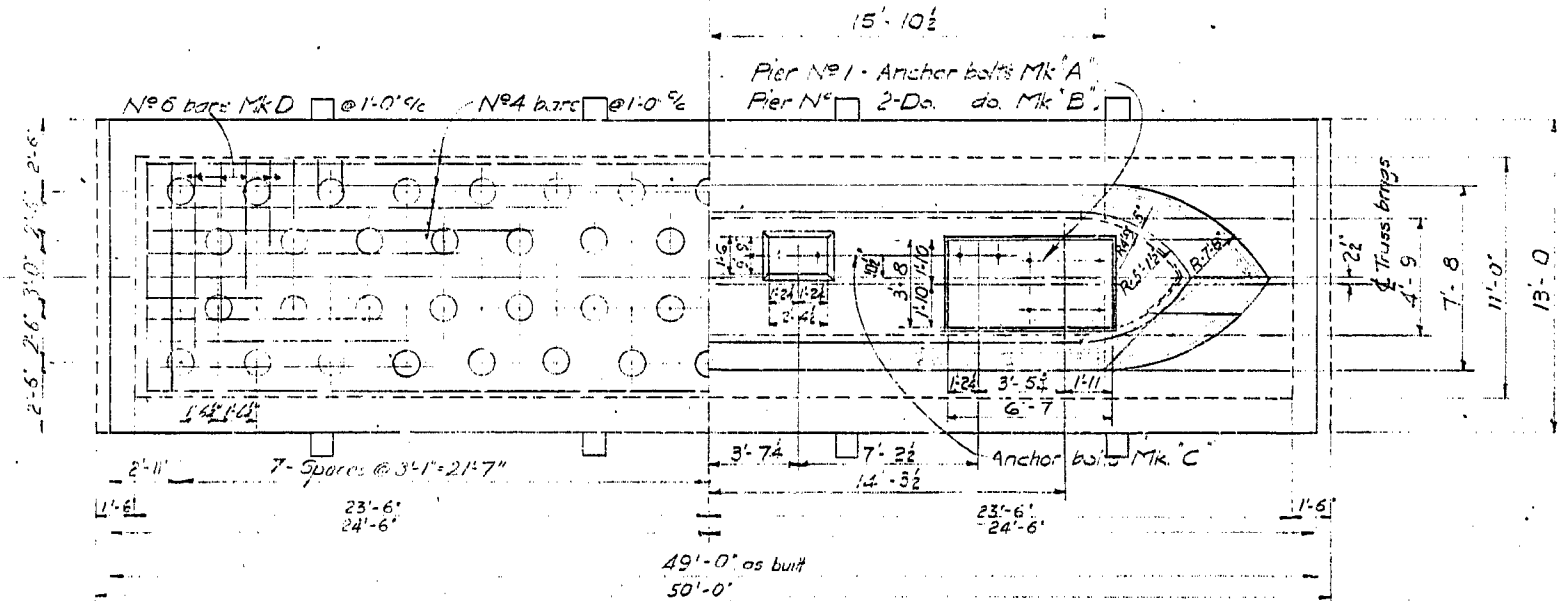
ANCHOR BOLT SETTING

Care to be taken in setting anchor bolts to ensure pipes are properly centered thereon. Open ends of pipes to be sealed with wood blocks as shown to exclude water until erection of steelwork. Use fibre gum or equal to ensure watertightness



END ELEVATION WEST PIER

SECT. ON C EAST PIER



HALF FOOTING PLAN

HALF PLAN

- Note
1. Both piers as shown except noted
 2. Concrete to be Class X.
 3. Exposed edges to be chamfered 1' except where noted.
 4. Footing to be carried down to elevation shown or to such lower elevations as may be ordered by the Engineer.
 5. Reinf. steel to have 3" cover.
 6. Splices to be staggered and bars to be lapped 40 diameters

Estimated concrete quantities (Class X) S.D.S. surplus for 2 piers. 116 Piles required (32'-0" lg).

CRANBROOK DISTRICT KOOTENAY-COLUMBIA HIGHWAY SPRINGBROOK BRIDGE PIERS SCALE 1/4" = 1'-0" & AS NOTED			
REVISIONS			
Rev.	Particulars	Init.	Date
A	Piles footing & concrete quantities	A. J. P.	10-21-51
B	Dimens. top of pier, 4 piles footing as built.	J. P.	10-21-51
GOVT. OF BRITISH COLUMBIA DEPT. OF PUBLIC WORKS BRIDGE ENGINEER'S OFFICE			
Made by	Init.	Date	DRAWING No.
Checked by	Init.	Date	BRIDGES
Approved by	Init.	Date	432-11