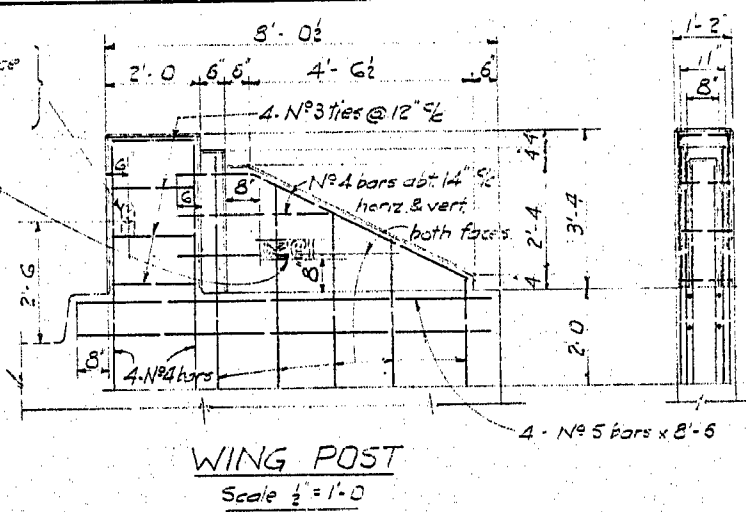


Traffic reflector and anchor on rear face furnished by Dept. of Public Works - set in post by Contractor.

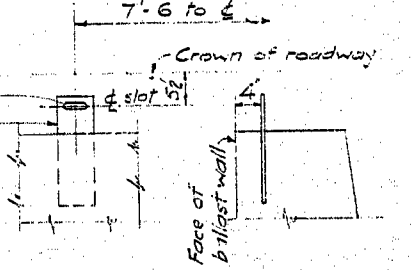
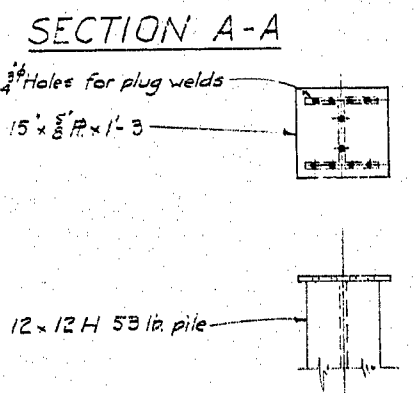
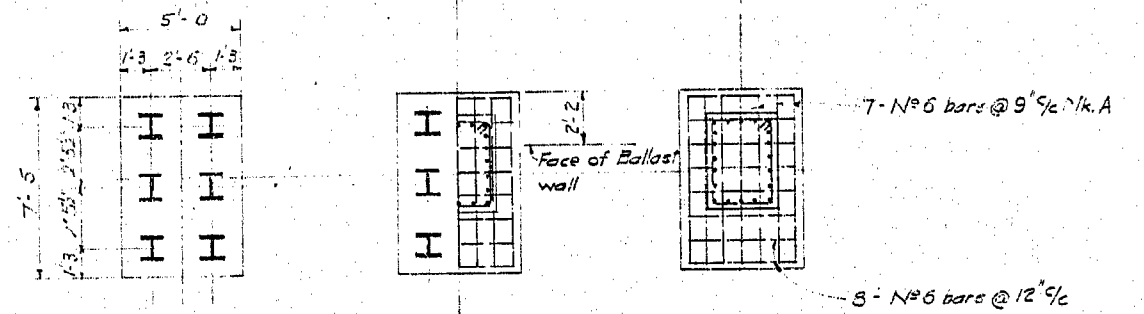
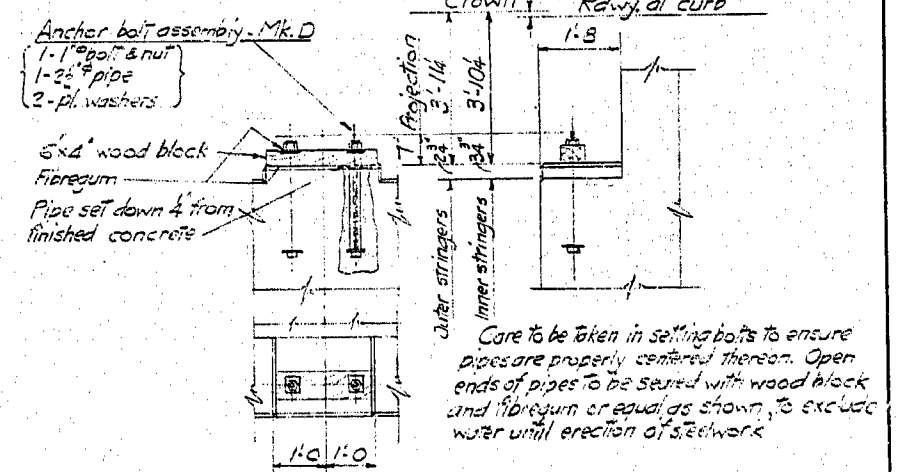
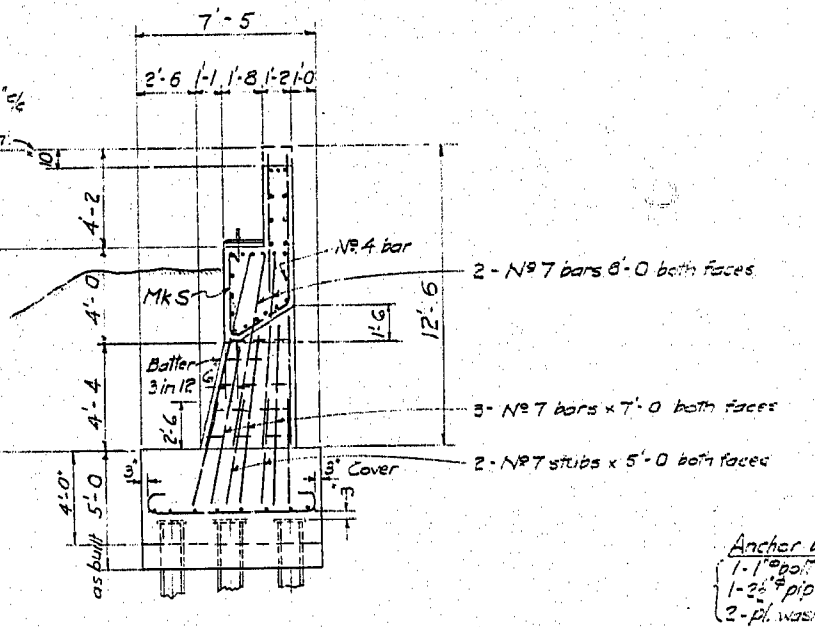
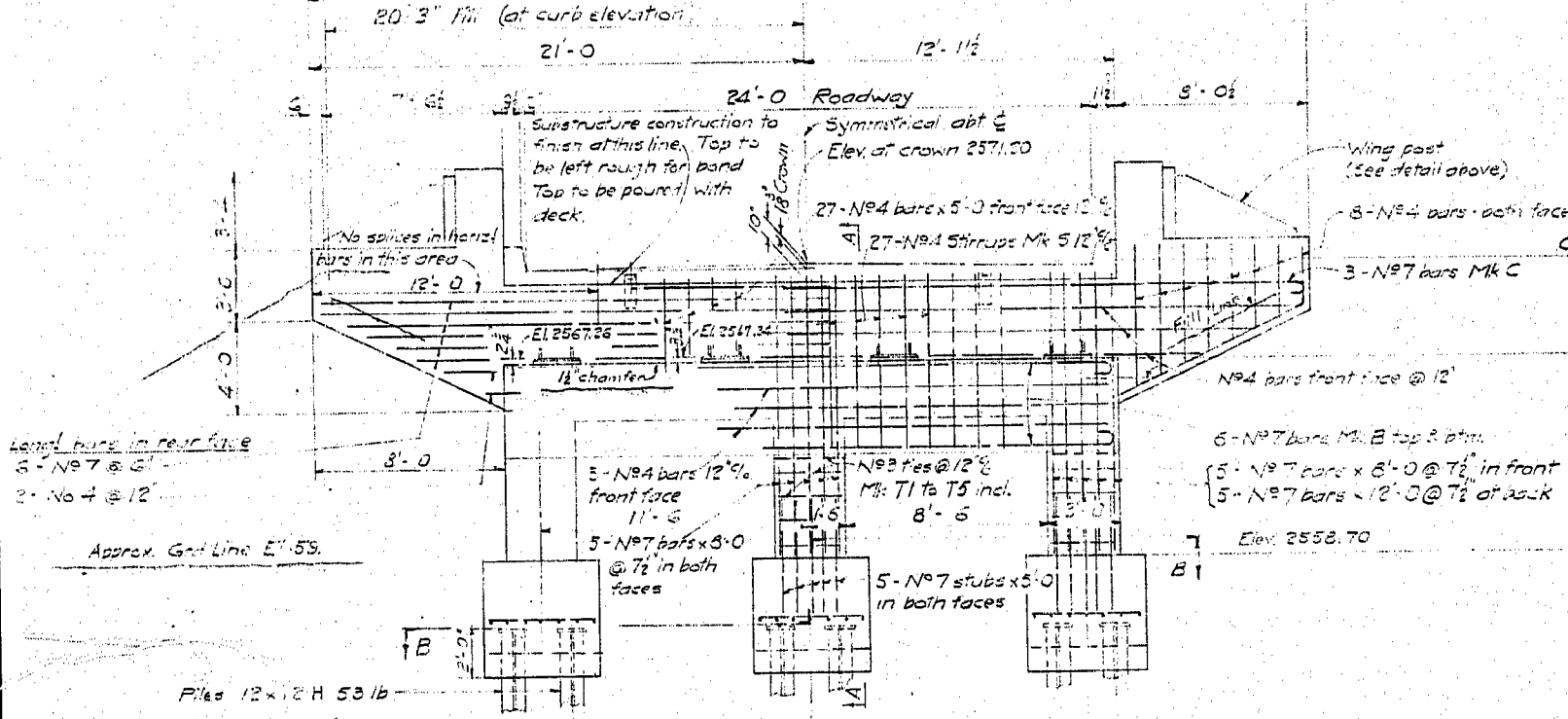
Year of construction cast in 5" high numerals on rear face of right hand post only on each abutment. Numerals forms loaned by Dept. of Public Wks.

Min. reinf. steel cover 1/2" Chamfer edges 1/2" where shown.



**LIST OF REINFORCING (ONE ABUT.)**

LOCATION	LENGTH	NO.	SIZE	BENDING	WT.
Footings	6' 21"	A	6'-11"		
Bridge seat	7' 12"	B	25'-6"		
Ballast wall	7' 6"	C	22'-4"		
Columns	3' 3"	T1	12'-6"		
	3' 3"	T2	12'-5"		
	3' 3"	T3	13'-0"		
	3' 3"	T4	13'-3"		
Bridge seat and ballast wall	4' 27"	S	5'-2"		
Footings	4' 6"	G	22"	Straight bars	
Do.	5'-0"	7	52"	"	
Columns	8'-0"	7	52"	"	
Do.	12'-0"	7	10"	"	
Do.	7'-0"	7	18"	"	
Ballast wall	5'-0"	4	27"	"	
Wing posts	8'-6"	5	8"	"	
	60 Limit	3	"	"	
	270 "	7	"	"	
	560 "	4	"	"	
40 lbs. 15 ga. black annealed wire					
TOTAL lbs. 3850					
TOTAL - for 2 abutments 7600					



DETAIL OF PILE CAP

RAISED BRIDGE SEAT  
Scale: 1/2" = 1'-0"

- Notes:-
- Both abutments as shown.
  - All concrete to be Class A.
  - All reinforcing steel to have 2" cover except where noted.
  - All exposed edges to be chamfered 1" except where noted.
  - Footings to be carried down to elevation shown or to such lower elevation as may be ordered by the Engineer.
  - Reinforcing bar splices to be lapped 40 diams.

Estimated quantity of Class A concrete for 2 abutments (excluding upper part of ball wall) 81 cu. yds.  
36 Bearing piles required (12" H 53" 25'-0" lg.)

CRANBROOK DISTRICT  
KOOTENAY-COLUMBIA HIGHWAY  
**SPRINGBROOK BRIDGE**  
ABUTMENTS  
SCALE: 1/2" = 1'-0" AS NOTED

REVISIONS		
No.	Particulars	Init. Date
A	6" bearing piles added	W.S. July 28
B	Depth of footing increased as per J.P. Oct 21/22	J.P.

GOVT. OF BRITISH COLUMBIA  
DEPT. OF PUBLIC WORKS  
BRIDGE ENGINEER'S OFFICE

Made by: B.L. Nov. 1922  
Checked by: W.S. Nov. 1922  
Approved by: W.S. Callan

DRAWING NO. 432-10

18931