

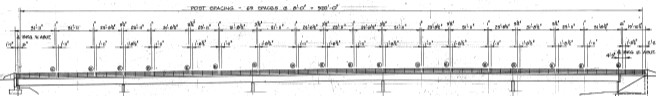
PLAN

1" = 20'

LEGEND

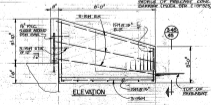
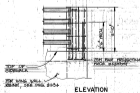
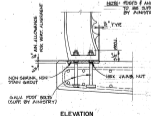
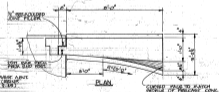
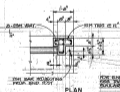
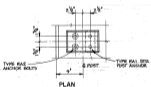
- ⊙ EXPANSION SLICE
- ⊙ BOLTER SLICE

NOTE: DIMENSIONS GIVEN ARE NOMINAL. DIMENSIONS ADJUSTED FOR VERTICAL CURVE.



ELEVATION

1" = 20'



ELEVATION

1/2" = 1'-0"

TYPICAL POST ANCHOR

1/2" = 1'-0"

TYPICAL CONCRETE END POST

1/2" = 1'-0"

CONCRETE END UNIT (EAST)

1/2" = 1'-0"



REID, CROWTHER & PARTNERS LIMITED  
 5475 101<sup>ST</sup> AVE. #200 MARKHAM ON L3R 9V7  
 NORTH MARKHAM, B. C. V1W 7S2



GOVERNMENT OF BRITISH COLUMBIA  
 MINISTRY OF TRANSPORTATION AND HIGHWAYS  
 BRIDGE ENGINEERING BRANCH

VERNON HIGHWAYS DISTRICT  
 MABEL LAKE ROAD

ENDERBY BRIDGE  
 HANDRAIL DETAILS

DESIGNED BY	REVISIONS	DATE	273622
CHECKED BY	NO.	DATE	
APPROVED BY	NO.	DATE	
DATE	NO.	DATE	
DATE	NO.	DATE	
DATE	NO.	DATE	