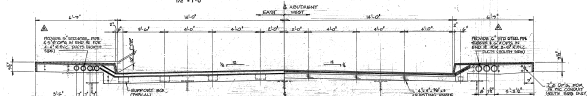
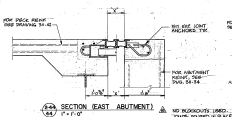


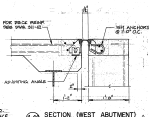
PLAN OF EXPANSION JOINTS
10' x 1'-0"



SECTION - EXPANSION JOINTS
10' x 1'-0"



SECTION (EAST ABUTMENT)
1' x 1'-0"

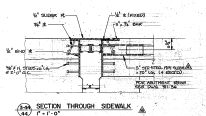


SECTION (WEST ABUTMENT)
1' x 1'-0"

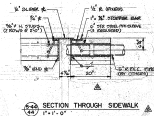
TEMPERATURE SETTING TABLE EAST ABUTMENT		
TEMP.	JOINT GAP	CONCRETE W.
-10°	-0.25"	5 1/2" (MAX.)
+80°	+1.1"	7"
40°	+1.44"	6 1/2"
60°	1.00"	6 1/2"
80°	1.02"	6 1/2"
70°	1.17"	4 1/2"
80°	1.17"	4 1/2"
80°	1.00"	4"
80°	1.00"	4"

NOTES

- EXPANSION JOINT DETAILS AT EAST ABUTMENT BASED ON HOME "B" SET-UP. ADJUSTMENT GOES INTO A TOTAL ADJUSTMENT CAPACITY OF 3".
- DEEP SEAL (SIL) MATERIALS & REINFORCING BARS FOR WEST ABUTMENT TO BE SUPPLIED BY CONTRACTOR. CONTRACTOR TO SUPPLY S.S. ANCHORS, ADJUSTING ANGLE, GLOBE PLATE, BOLT, SCREWS & OTHER MATERIALS FOR JOINT ANCHORS & INSTALLATION.
- ALL STEEL SURFACES NOT IN CONTACT WITH SAND OR CONCRETE TO BE GALVANIZED AT 500-D-3000.
- CROWN OF ROAD TO CONFORM TO DET. 140.



SECTION THROUGH SIDEWALK
1' x 1'-0"



SECTION THROUGH SIDEWALK
1' x 1'-0"

REID, CROWTHER & PARTNERS LIMITED
 SUITE 300 - 248 W. ESPRANDE ST.
 NORTH VANCOUVER, B.C. V7R 3K7

GOVERNMENT OF BRITISH COLUMBIA
 MINISTRY OF TRANSPORTATION AND HIGHWAYS
 BRIDGE ENGINEERING BRANCH

VERNON HIGHWAYS DISTRICT
 MABEL LAKE ROAD
 ENDERBY BRIDGE
 EXPANSION JOINT DETAILS

DATE: 11/20/83

DESIGNED BY: JEB	CHECKED BY: JEB
DRAWN BY: JEB	CHECKED BY: JEB
SCALE: AS SHOWN	PROJECT NO: 31-46 B
DATE: 11/20/83	DESIGNER: JEB

708A