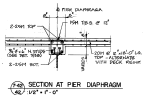


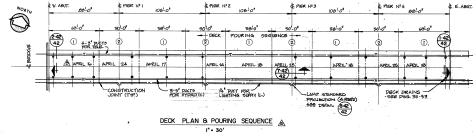
TYPICAL DECK SECTION
1/2" = 1'-0"

TYPICAL DECK DRAWN
1/2" = 1'-0"

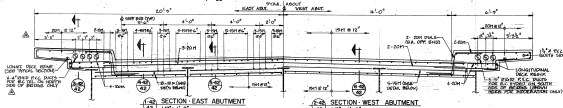
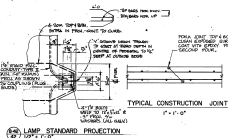


NOTES

1. DETAILS OF DIMENSIONALITY IS NOT REBATED LONGITUDINAL DIM. ARE TO BE CHANGED, DIMENSIONS ARE TO BE DIMENSIONS SO THAT NOT MORE THAN EIGHTY TYPED BAR IS PLACED AT ANY CROSS-SECTION OF THE DECK. LAP OF DIMS ARE SPACED TO BE 40 DIA. DIA.
2. DETECTION AND DIMENSIONS IN CHANGE WILL BE ACCOMPANIED BY A ADDED VERTICAL CURVE WHICH WILL BE SUBMITTED BY THE ARCHITECT. DIMENSIONS WILL VARY TO SUIT SLAB THICKNESS TO MAINTAIN CONCRETE.
3. FOR ADDITIONAL DIMENSIONS NOTES SEE DRAWING 31-25.

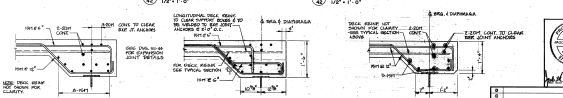


DECK PLAN & POURING SEQUENCE
1" = 30'



SECTION - EAST ABUTMENT
1/2" = 1'-0"

SECTION - WEST ABUTMENT
1/2" = 1'-0"



DETAIL
1" = 1'-0"

DETAIL
1" = 1'-0"

DETAIL
1" = 1'-0"

REID, CROWTHER & PARTNERS LIMITED
SUITE 203 - 200 W. SPADINA ST.
NORTH WASHINGTON, B.C. V7M 2S7

MINISTRY OF TRANSPORTATION AND HIGHWAYS
BRIDGE ENGINEERING BRANCH

VERNON HIGHWAYS DISTRICT
MABEL LAKE ROAD
ENDERBY BRIDGE
DECK DETAILS

NO.	DATE	BY	CHECKED	SCALE
1	1973.17	JES	JES	AS SHOWN
2	1973.17	JES	JES	AS SHOWN
3	1973.17	JES	JES	AS SHOWN
4	1973.17	JES	JES	AS SHOWN
5	1973.17	JES	JES	AS SHOWN
6	1973.17	JES	JES	AS SHOWN
7	1973.17	JES	JES	AS SHOWN
8	1973.17	JES	JES	AS SHOWN
9	1973.17	JES	JES	AS SHOWN
10	1973.17	JES	JES	AS SHOWN

REVISIONS

DATE: 1973.17

SCALE: AS SHOWN

PROJECT: MABEL LAKE ROAD

BRIDGE: ENDERBY BRIDGE

DECK DETAILS

NO. 31-42 B