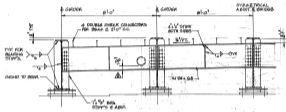
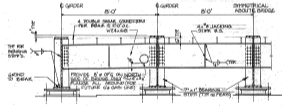


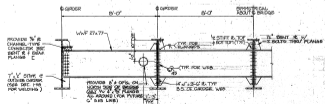
1/2" = 1'-0"
37 EAST ABUTMENT DIAPHRAGM



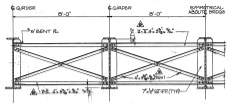
1/2" = 1'-0"
38 WEST ABUTMENT DIAPHRAGM



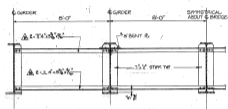
1/2" = 1'-0"
39 PER DIAPHRAGM (TYPICAL)



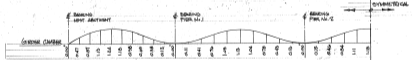
1/2" = 1'-0"
40 INTERMEDIATE DIAPHRAGM (TYPICAL)



1/2" = 1'-0"
41 TRANSVERSE VERTICAL BRACING (T.V.B.)



1/2" = 1'-0"
42 TRANSVERSE STRUTS (T.S.)



CAMP DIAGRAM

M.T.S.
 H.E. GIBBERT & SONS
 CIVIL ENGINEERS AND SURVEYORS (VICTORIA)

NOTE: ALL ANGLES FOR BRACING TO BE INDICATED FROM B.

REID, CROWTHER & PARTNERS LIMITED
 SUITE 100 - 200 W. REPLANSE ST.
 NORTH VANCOUVER, B.C. V7M 2K7



GOVERNMENT OF BRITISH COLUMBIA
MINISTRY OF TRANSPORTATION AND HIGHWAYS
 BRIDGE ENGINEERING BRANCH

VERNON HIGHWAYS DISTRICT
 MADEL LAKE ROAD
 ENDERSY BRIDGE
 DIAPHRAGM B BRACING ELEVATIONS



| | | | | | |
|---|------------------------|--------|--------------------|-----------|---------|
| B C A DATE | AS BUILT (A.A. TALBOT) | 2008 | SCALE | NOTED | DATE |
| | PROJECT NUMBER | 273616 | DRAWN | J.M. JEB | CHECKED |
| | SHEET NO. | 311-38 | PROJECT SUPERVISOR | M.D. B.L. | DATE |
| | TOTAL SHEETS | 311-38 | PROJECT ENGINEER | J.M. JEB | DATE |