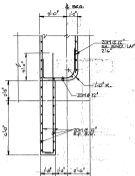
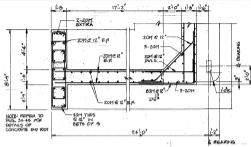


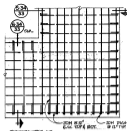
SECTION - WEST ABUTMENT
3/8" x 1'-0"



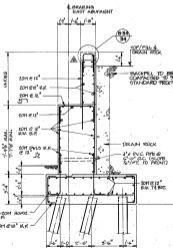
PLAN SECTION - WEST ABUTMENT
3/8" x 1'-0"



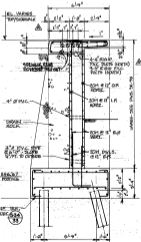
PLAN SECTION - EAST ABUTMENT
3/8" x 1'-0"



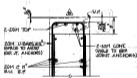
EAST ABUTMENT - FOOTING
3/8" x 1'-0"



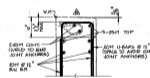
SECTION - EAST ABUTMENT
3/8" x 1'-0"



SECTION - WING WALL
3/8" x 1'-0"



DETAIL
3/8" x 1'-0"



DETAIL
3/8" x 1'-0"

- NOTES
- FOR CONCRETE NOTES, SEE SHEET 31-32.
 - FOR STRUCTURAL STEEL NOTES, SEE SHEET 31-34.
 - REINFORCING STEEL IN FOOTINGS TO BE SET 2" CLEAR OF STEEL PILES.



REID, CROWTHER & PARTNERS LIMITED
SUITE 200 - 200 W. REPLASNE ST.
NORTH VANCOUVER, B.C. V1M 3B7

GOVERNMENT OF BRITISH COLUMBIA
MINISTRY OF TRANSPORTATION AND HIGHWAYS
BRIDGE ENGINEERING BRANCH

VERNON HIGHWAYS DISTRICT
MABEL LAKE ROAD
ENDERBY BRIDGE
ABUTMENT DETAILS

D	DESIGNED BY	SCALE	NOTED	REVISED BY	27.5.12
C	CHECKED	DATE	CHECKED	DATE	
A	APPROVED BY	DATE	APPROVED BY	DATE	

DATE	BY	REASON
27.5.12	JCS	ISSUED FOR CONSTRUCTION