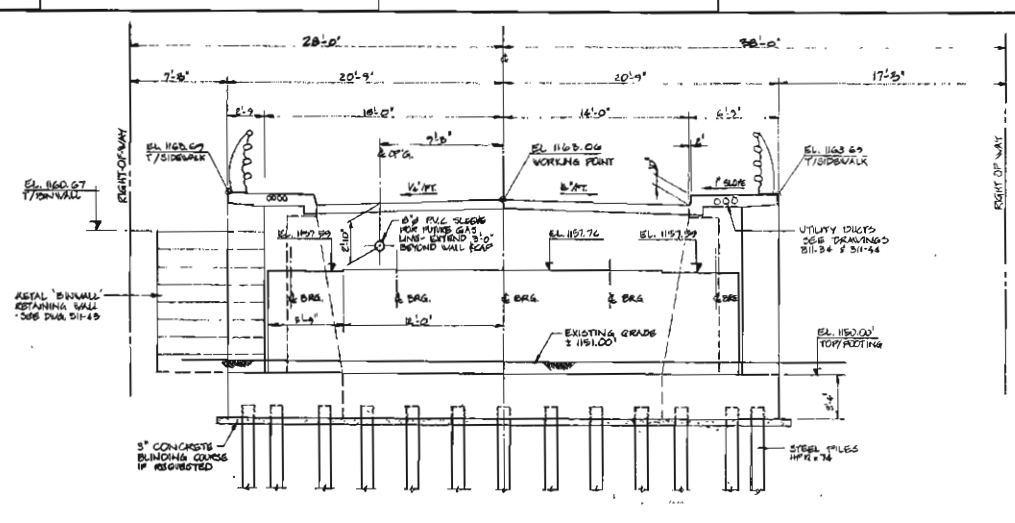
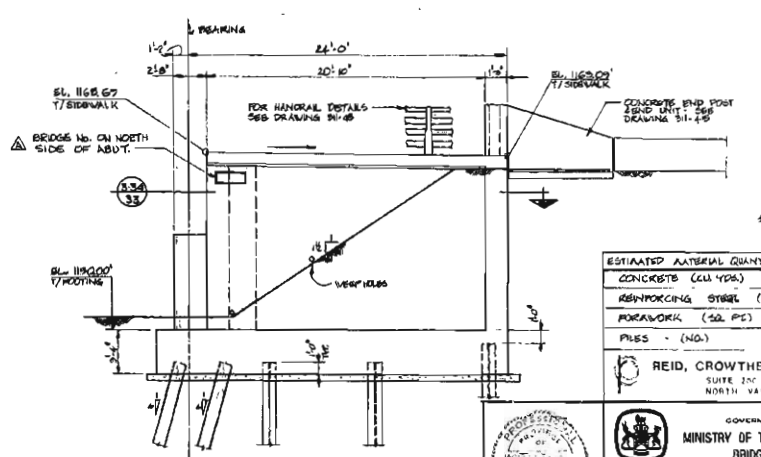


PLAN
1/4" = 1'-0"



FRONT ELEVATION (LOOKING EAST)
1/4" = 1'-0"



ELEVATION - SOUTH WING WALL (NORTH ORR. HAND)
1/4" = 1'-0"

* INCLUDES 2 CONC. SHEL
POSTS & 2 BIND UNITS

ESTIMATED MATERIAL QUANTITIES FOR EACH ABUTMENT *	
CONCRETE (CU YDS)	210
REINFORCING STEEL (LBS.)	25,900
FORMWORK (SQ. FT.)	2,600
PILES - (NO.)	24

REID, CROWTHER & PARTNERS (LIMITED)
SUITE 202 760 W. 10TH AVENUE
NORTH VANCOUVER B.C. V7M 1G



GOVERNMENT OF BRITISH COLUMBIA
MINISTRY OF TRANSPORTATION AND HIGHWAYS
BRIDGE ENGINEERING BRANCH

VERNON HIGHWAYS DISTRICT
MABEL LAKE ROAD
ENDERBY BRIDGE
EAST ABUTMENT - PLAN & ELEVATIONS

NO.	DATE	REVISIONS	SCALE	NOTED	CHECKED	DRIVEN
D						
B						
A	NO BUILT (A. TALBOT)	2/20/1948				