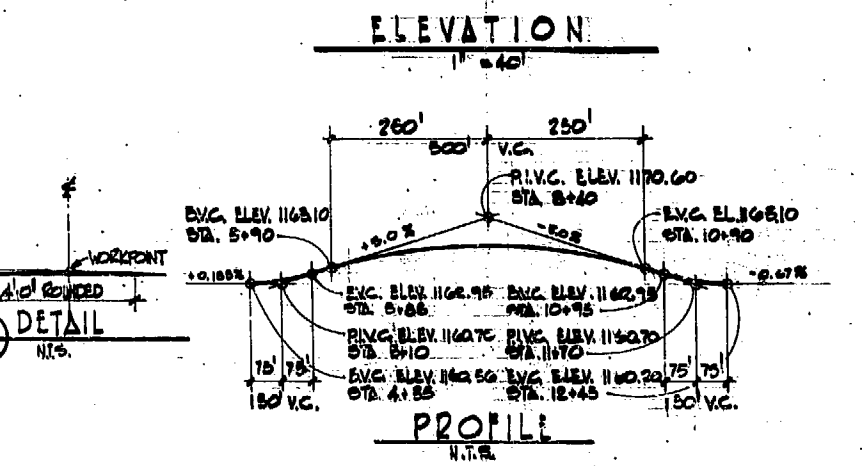
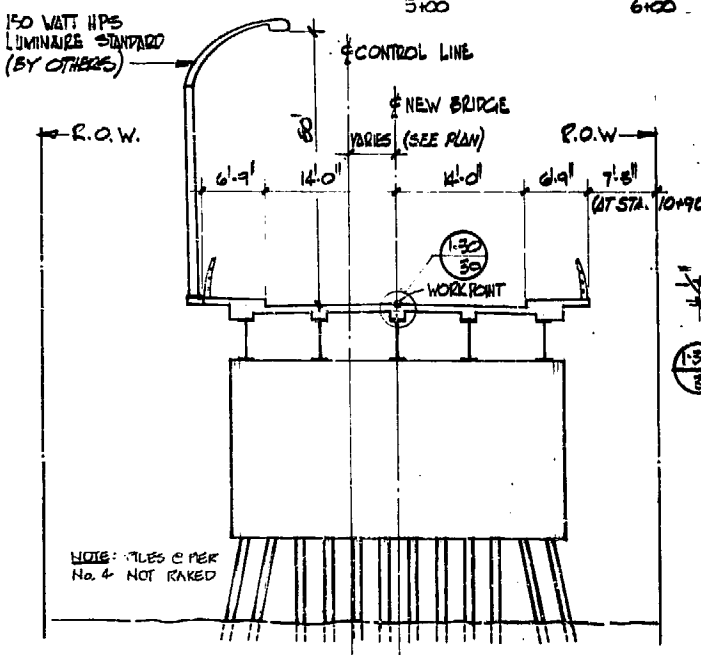


**NOTES**

▲ FOR DETAILS OF B.C. HYDRO DUCTS BEYOND ABUTMENTS, SEE B.C. HYDRO DWG. 302-U07-D4535 REV. 1



**PILE PENETRATION DATA**

PILE LOCATION	DESIGN DATA (FT.)		AS BUILT DATA (FT.)	
	AVE. PILE PENETRATION	TIP ELEVATION	AVE. PILE PENETRATION RANGE	AVE. TIP ELEVATION
WEST ABUT. PIER No 1	105	1046.00	81 TO 125	102
PIER No 2	105	1095.00	106 TO 121	112
PIER No 3	130	996.00	62 TO 111	94
PIER No 4	105	1021.00	62 TO 77	71
EAST ABUT.	120	1021.00	65 TO 96	66
	110	1095.00	79 TO 111	95

**REID, CROWTHER & PARTNERS LIMITED**  
SUITE 200 - 260 W. ESPLANADE ST.  
NORTH VANCOUVER B.C. V7M 3A7

GOVERNMENT OF BRITISH COLUMBIA  
MINISTRY OF TRANSPORTATION AND HIGHWAYS  
BRIDGE ENGINEERING BRANCH

VERNON HIGHWAYS DISTRICT  
MABEL LAKE ROAD

ENDERBY BRIDGE  
GENERAL ARRANGEMENT

PROFESSIONAL ENGINEER  
JAGDISH R. SONDI  
BRITISH COLUMBIA

PREPARED UNDER THE DIRECTION OF: DATE: SCALE: AS SHOWN NEG. No. 273608

APPROVED FOR USE IN CONSTRUCTION: DATE: EXAMINED AND ACCEPTED: DATE: DRAWING No. 311-30 B