

Position: **Reference Job # MR01**

Ministry: Transportation and Highways

Working Title: **Marine Captain**

Branch: Marine Branch, Galena Bay Ferry

Level: Range 24

Location: Revelstoke

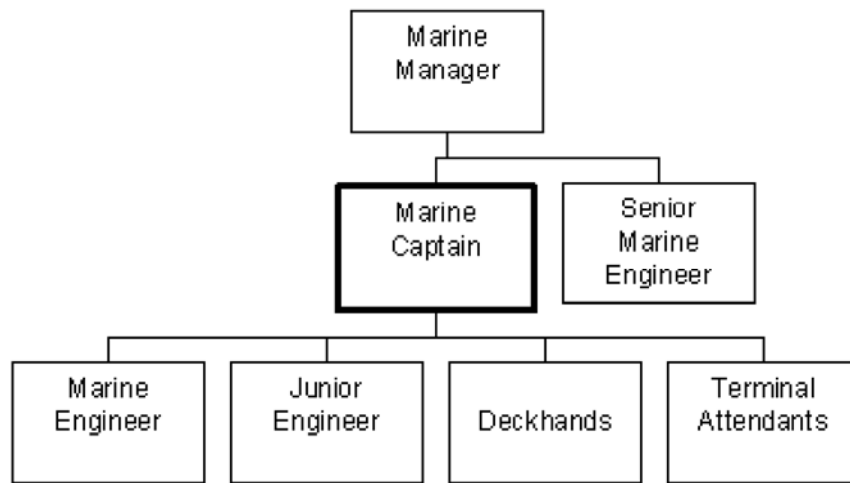
NOC Code: 2273

PRIMARY FUNCTION

To command and assume responsibility for the shift operation and operational maintenance of an inland vehicle and passenger ferry of less than 1250 gross tonnage registered under and operating in accordance with the Canada Shipping Act and related regulation.

JOB DUTIES AND TASKS

1. Commands and navigates a passenger vehicle ferry on an inland waterway
 - a. commands, navigates and docks vessel in accordance with the Canada Shipping Act, safe working practices and related regulations
 - b. ensures that the objectives of the posted schedule are done in the safest and most efficient manner
 - c. makes decisions concerning the safety of ship, passengers and crew when necessary such as during emergencies and when changing course etc.
 - d. operates electronic aids to navigation and applies information received
 - e. participates in vessel traffic management systems operated by the Federal Ministry of Transport and advising transiting vessels of the ferry's presence and its intended route
 - f. maintains and completes logs, records and reports relating to the ferry and marine incidents
 - g. observes and maintains behavioural discipline of passengers while aboard ferry
 - h. supervises crew and shore staff including recruiting, orientation, arranging training and appraising employee performance
 - i. ensures vessel and docking facilities are kept up to all standards and recommends major repairs
2. Performs other related duties
 - a. exchanges information with the general public regarding ferry operations
 - b. decides when and if it is necessary to deviate from the posted schedule including cessation of service due to weather conditions, machinery/equipment problems or personnel deficiencies
 - c. ensures vessels and docking facilities are in accordance with standards and recommends major repairs
 - d. monitors contract performance on works and service contracts
 - e. hires contractors and authorizes Local Minor Purchase Orders



FACTOR	REASON FOR CLASSIFICATION	DEGREE	POINTS
1	<p>JOB KNOWLEDGE</p> <p>Understand the principles of marine navigation and ferry operations to apply marine standards to direct a passenger ferry operation.</p>	G	250
2	<p>MENTAL DEMANDS</p> <p>Judgement to modify approaches to plan a course of action to ensure the safety of crew, passengers and vessel in all operational circumstances.</p>	G	200
3	<p>INTERPERSONAL COMMUNICATIONS SKILL</p> <p>Persuasion required to use counselling skills to appraise and discipline subordinates.</p>	D	45
4	<p>PHYSICAL COORDINATION AND DEXTERITY</p> <p>Significant coordination and dexterity required to manoeuvre and dock vessels in all conditions.</p>	D	22.5
5	<p>RESPONSIBILITY FOR WORK ASSIGNMENTS</p> <p>Guided by marine transport standards, commands a passenger ferry ensuring the safety of passengers, crew and vessel in all operational circumstances.</p>	F	160
6	<p>RESPONSIBILITY FOR FINANCIAL RESOURCES</p> <p>Moderate financial responsibility to authorize purchase on Local Minor Purchase Orders to a \$5,000 spending limit.</p>	D	22.5

FACTOR	REASON FOR CLASSIFICATION	DEGREE	POINTS
7	RESPONSIBILITY FOR PHYSICAL ASSETS/INFORMATION Major level of responsibility to command a passenger vehicle ferry.	F	43
8	RESPONSIBILITY FOR HUMAN RESOURCES Responsibility to supervise staff, appraise employee performance and take disciplinary action (5-10 FTEs).	DF	21
9	RESPONSIBILITY FOR WELL BEING/SAFETY OF OTHERS High level of care and attention to command a passenger ferry vessel.	F	50
10	SENSORY EFFORT/MULTIPLE DEMANDS Intense awareness to almost always observe weather and water conditions.	D	18
11	PHYSICAL EFFORT Moderate physical effort to frequently stand or walk.	C	12
12	SURROUNDINGS Exposure to frequent outside work in all weather conditions (shelter available).	C	6
13	HAZARDS Moderate exposure to hazards from frequent walking on slippery surfaces.	C	6

Total Points: 856

Level: Range 24