

Position: **Reference Job #IE01**

Ministry: Forests

Working Title: **Check Scaler - Interior**

Branch: Nelson Forest Region

Level: Range 14 (Paid Range 15 per 13th Master.)

Location: Cranbrook

NOC Code: 2223

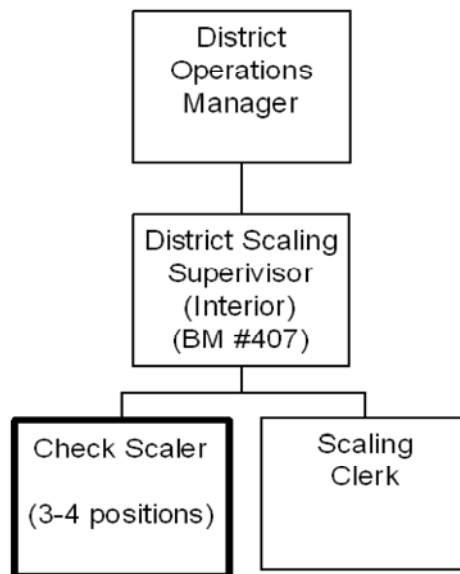
## PRIMARY FUNCTION

To administer the forest district scaling program in compliance with the Forest Act, Forest Practices Code, various other acts, provincial policies and regional and district procedures.

## JOB DUTIES AND TASKS

1. Performs check scales of industry scaled interior forest products
  - a. conducts random unannounced check scales of loads previously scaled by a licensed industry Scaler
  - b. replaces original scale of industry Scaler with the results of the Check Scaler's audit
  - c. identifies problem areas found during a check scale and develops training techniques to rectify the problem
  - d. identifies, explains and resolves discrepancies in scale volume or classification with the original Scaler
  - e. checks the equipment associated with a weight scale operation for certification and mechanical effectiveness
  - f. recommends the suspension of licensed Scalers or weigh scale operators
  - g. prepares reports on all Scalers working within the Forest Enforcement Officer's area of responsibility
2. Maintains standards of scaling
  - a. conducts technical audits of scale sites
  - b. inspects site conditions for compliance to site authorization standards and prepares Site Inspection Reports
  - c. ensures scalers are complying with conditions of their Authorization to Scale
  - d. orders corrective action where scaling practice in non-compliance
  - e. recommends suspension or cancellation of scale related authorizations or licenses
3. Administers and monitors the District Scaling Program
  - a. reviews requests for scaling authorization for licensed private Scalers and recommends issuance
  - b. prepares and forwards to the Scaling Supervisor monthly check scaling and site inspection reports
  - c. conducts seizures of unscaled and/or unmarked timber
  - d. establishes and maintains contact with intermediate level industry representatives
  - e. administers timber marking exemption and scaled timber branch applications
  - f. inspects Special Forest Products for export compliance
  - g. reports variations which exceed prescribed limits in volume, grade or value and recommends to the Scaling Officer, cancellations and replacement of the original scale

4. Ensures weigh scale operations are conducted in accordance with government legislation and ministry policy
  - a. visits the weigh scales sites regularly and monitors the records maintained by the weigh scale operator
  - b. checks weigh scale data tabulations, inventory reports, and classification and measurement of loads
  - c. ensures that operators are correctly identifying and maintaining the frequency of sample loads
  - d. ensures that weigh scalers are aware of the requirements of the Department of Federal Weights and Measures, and of the Provincial Ministry of Transportation and Highways
  - e. programs electronic sample selectors and monitors sampling plans by checking the frequency of sample against the stratum control sheet and ensures scale station site standards are being adhered to
5. Takes direct Enforcement Action where violations occur
  - a. conducts and coordinates seizures of timber as set out under the guidelines of the Forest Act, issues warning and violation tickets, interviews witnesses, takes statements and prepares seizure reports
  - b. provides scale records and other data to the Forest Revenue Inspection Teams
  - c. liaises with Crown Counsel in preparation of cases and acts as an expert witness for Crown Counsel
  - d. follows up as directed on inspections to ensure that reported infractions or deficiencies are rectified
  - e. checks, participates on road blocks, and monitors vehicle transport of any timber or timber products
6. Performs other related duties
  - a. measures forest products for revenue or cut control purposes
  - b. conducts log, lumber studies and waste residue surveys as required
  - c. ensures equipment such as field computers, scale checks, radios and chainsaws is in good working order
  - d. assists the Regional Scaling Manager in conducting scaling examinations for Licensed Log Scalers
  - e. ensures safety standards are maintained



FACTOR	REASON FOR CLASSIFICATION	DEGREE	POINTS
1	<p><b>JOB KNOWLEDGE</b></p> <p>Have a practical understanding of the Forest Act and Forest Practices Code to enforce scaling regulations and procedures in a forest district.</p>	F	190
2	<p><b>MENTAL DEMANDS</b></p> <p>Judgement to assess scaling information and choose an approach using a combination of accepted scaling techniques and equipment to enforce scaling regulations.</p>	D	100
3	<p><b>INTERPERSONAL COMMUNICATIONS SKILL</b></p> <p>Persuasion required to use basic negotiation skills to deal with incidents of antagonism while acting in an enforcement capacity.</p>	D	45
4	<p><b>PHYSICAL COORDINATION AND DEXTERITY</b></p> <p>Moderate coordination and dexterity required to operate a 4x4 vehicle.</p>	C	15
5	<p><b>RESPONSIBILITY FOR WORK ASSIGNMENTS</b></p> <p>Guided by scaling regulations and district scaling plans, selects alternative courses of action to enforce scaling regulations.</p>	D	75
6	<p><b>RESPONSIBILITY FOR FINANCIAL RESOURCES</b></p> <p>Moderate financial responsibility to perform check scales of industry scaled forest products and identify problem areas.</p>	D	22.5

<b>FACTOR</b>	<b>REASON FOR CLASSIFICATION</b>	<b>DEGREE</b>	<b>POINTS</b>
7	<b>RESPONSIBILITY FOR PHYSICAL ASSETS/INFORMATION</b> Significant responsibility for the control of the quality of the information maintained by weigh scaler operations.	D	22.5
8	<b>RESPONSIBILITY FOR HUMAN RESOURCES</b> Responsibility to provide formal instruction to industry scalars.	B	9
9	<b>RESPONSIBILITY FOR WELL BEING/SAFETY OF OTHERS</b> Moderate care and attention to frequently drive on logging roads.	C	15
10	<b>SENSORY EFFORT/MULTIPLE DEMANDS</b> Focused attention to detail to frequently inspect forest products.	C	12
11	<b>PHYSICAL EFFORT</b> Heavy physical effort to regularly move and turn heavy logs by hand or by using peevee.	E	24
12	<b>SURROUNDINGS</b> Exposure to all weather condition frequently in the field with no shelter.	D	9
13	<b>HAZARDS</b> Significant exposure to hazards from frequently working alone in remote areas.	D	9

Total Points: 548

Level: Range 14

Paid Range 15 per 13th Master.